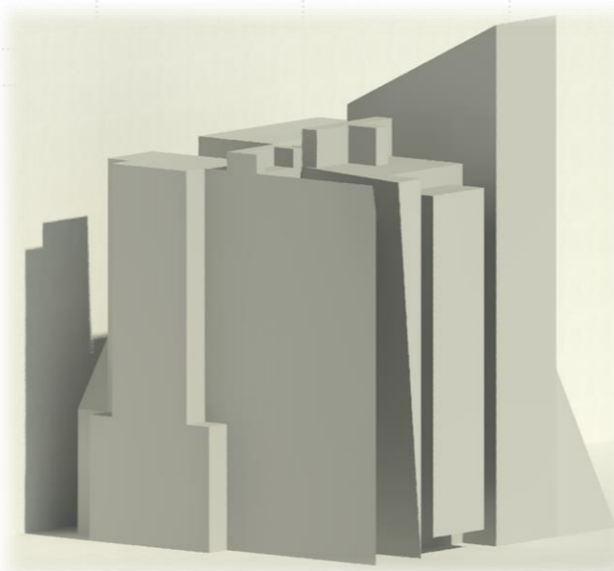




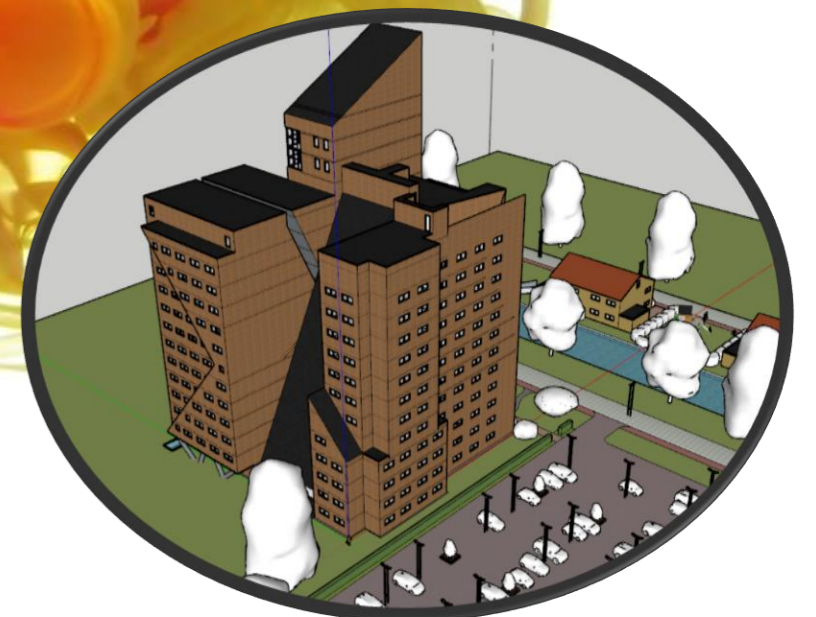
Graphic Architectural Expression



Projection & Presentation
Week 37 & 38

Inhoudsopgave

1. Projection	3
1.1 The component	4
1.2 Graphic Expression COMPONENT	5
1.3 The MODEL	9
1.4 Graphic Expression MODEL	10
Exercise 1	14
2. Presentation	20
2.1 Geometric Analysis	21
2.2 Transformation	22
2.3 Graphic Expression of the 3D Model	23
2.4. Presentation	29
Exercise 2	30

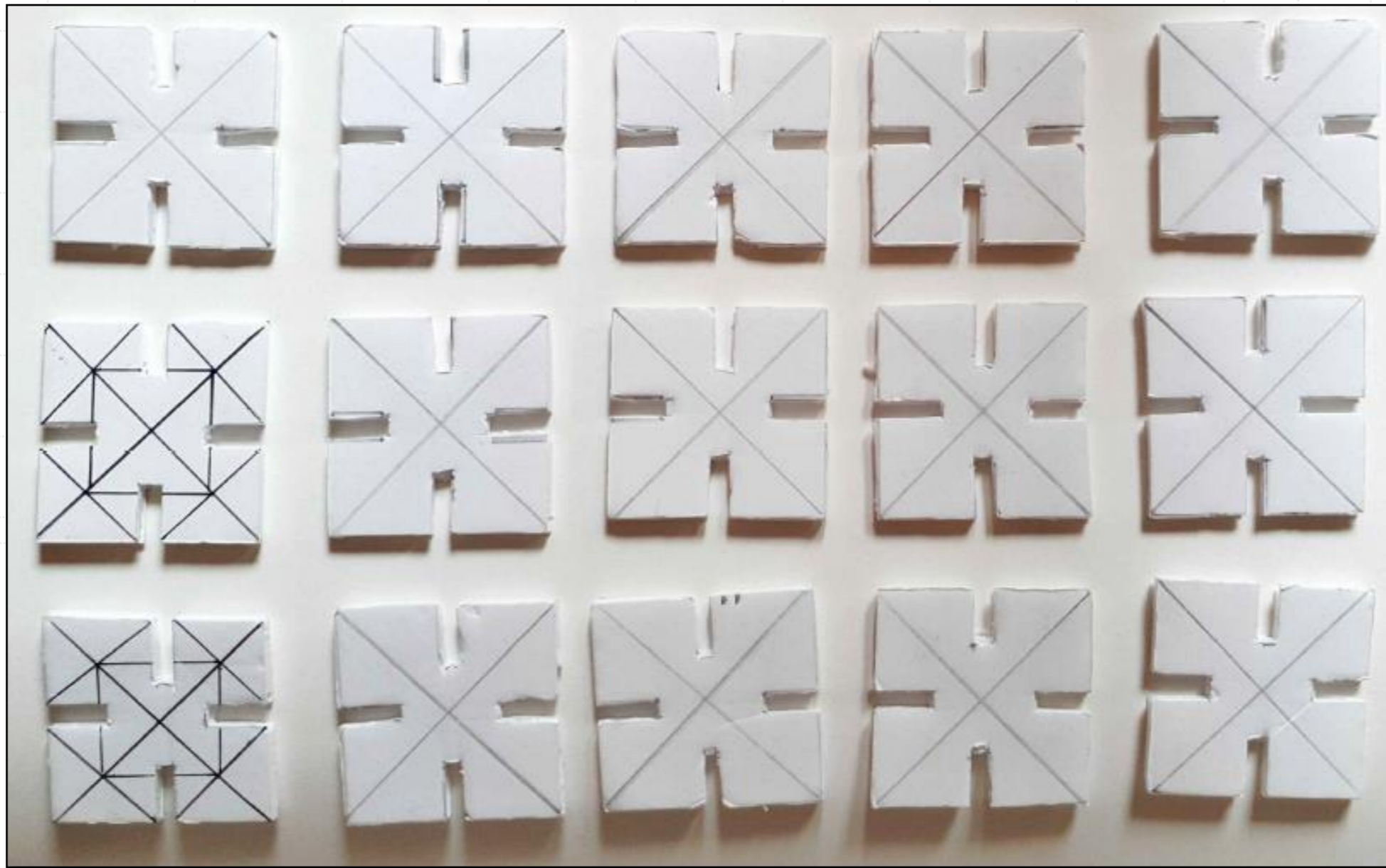


Week 1 (37)

Projection



1.1 The component



1.1 Created Components

Assignment:
Draw a isometric and 3
orthographic projections
of the component.

1.2.1 Graphic Expression COMPONENT

Right



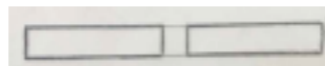
Front



Iso



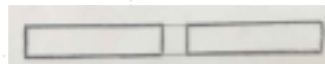
Top



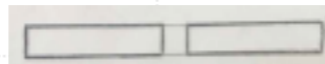
Assignment:
Draw a isometric and 3
orthographic projections
of the component.

1.2.2 Graphic Expression COMPONENT

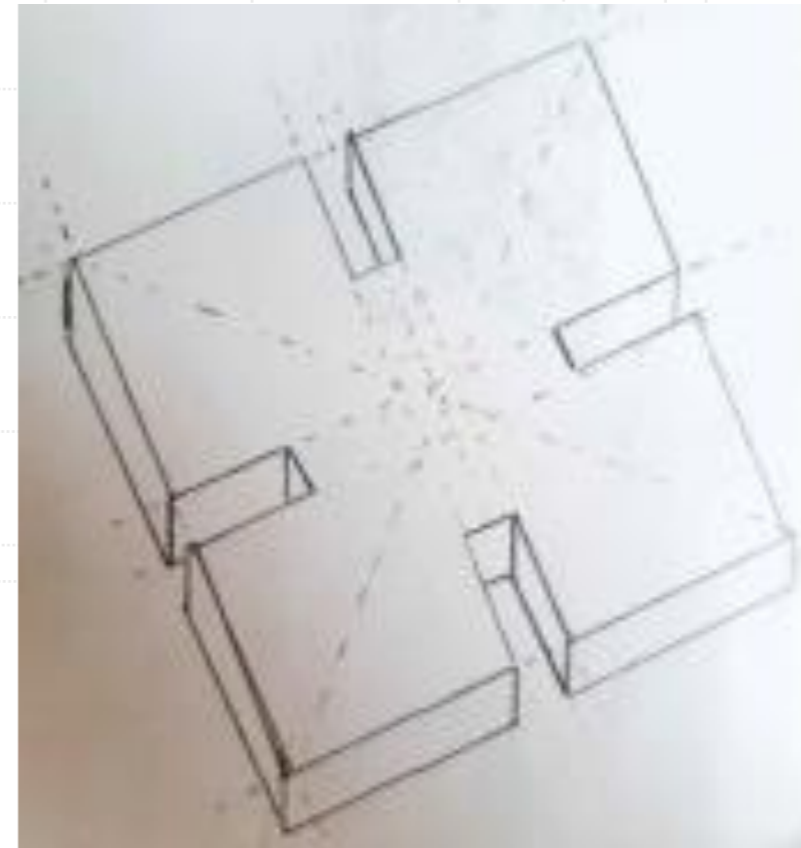
Right



Front



Iso



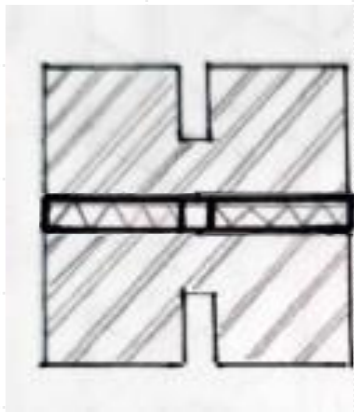
Top



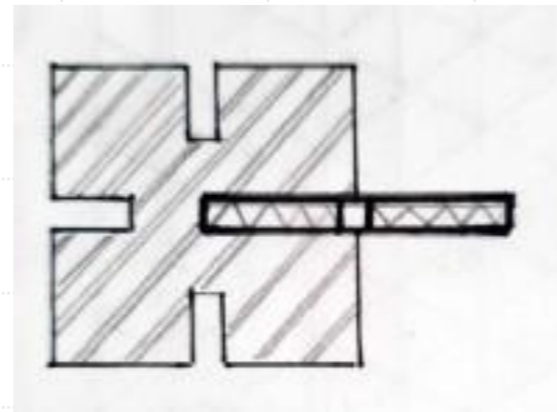
Assignment:
Draw a isometric and 3
orthographic projections
of the component.

1.2.3 Graphic Expression COMPONENT

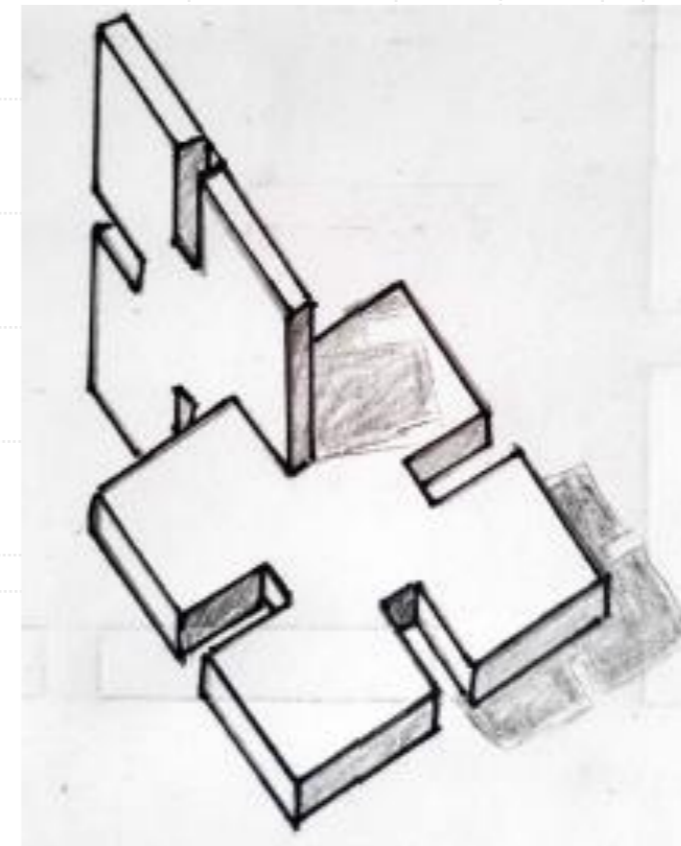
Right



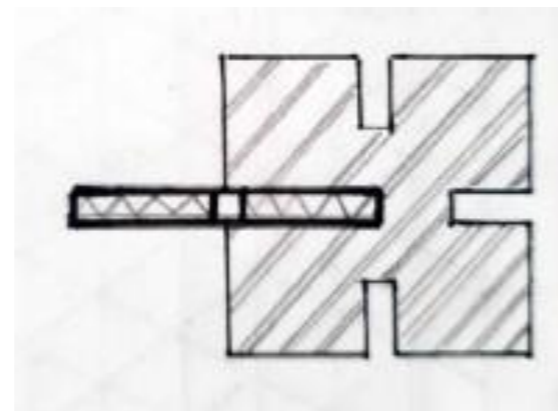
Front



Iso



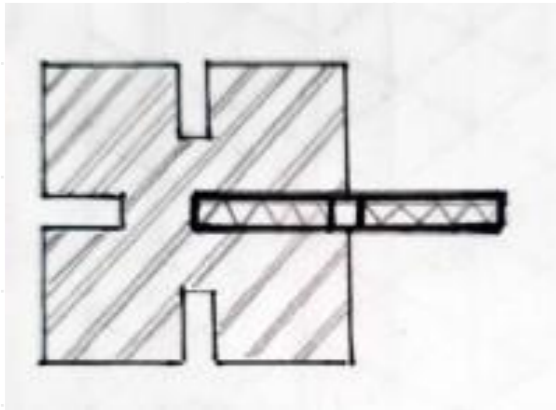
Top



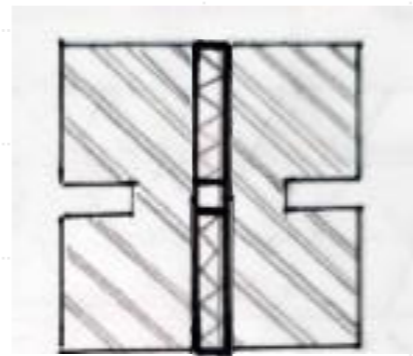
Assignment:
Draw a isometric and 3
orthographic projections
of the component.

1.2.3 Graphic Expression COMPONENT

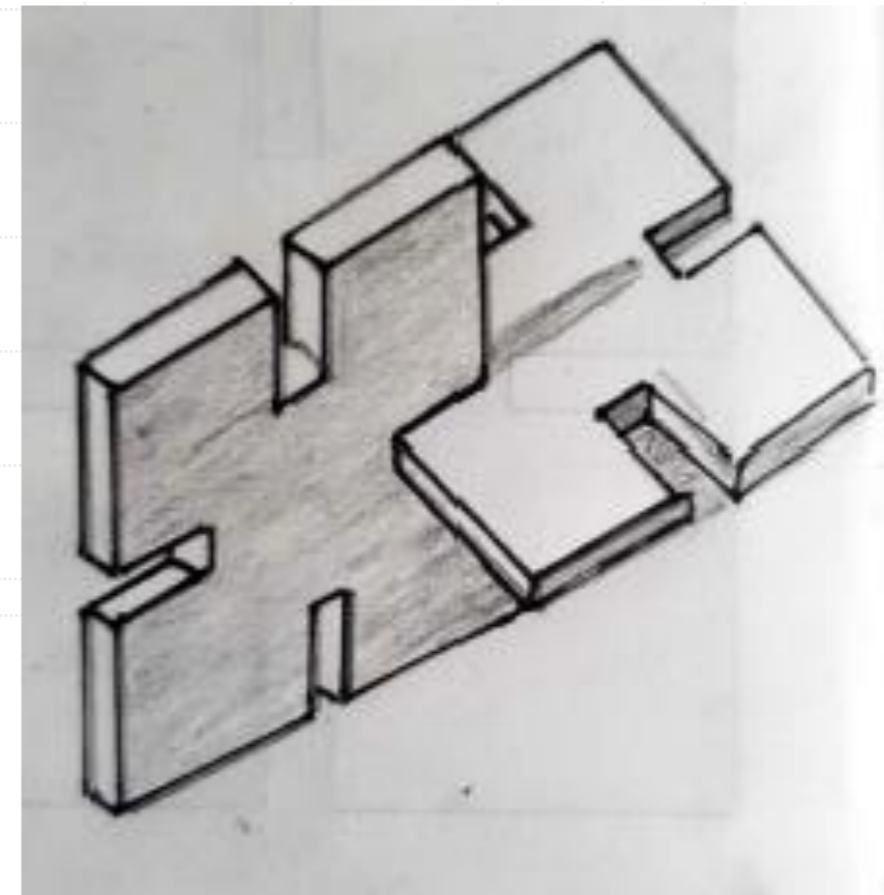
Right



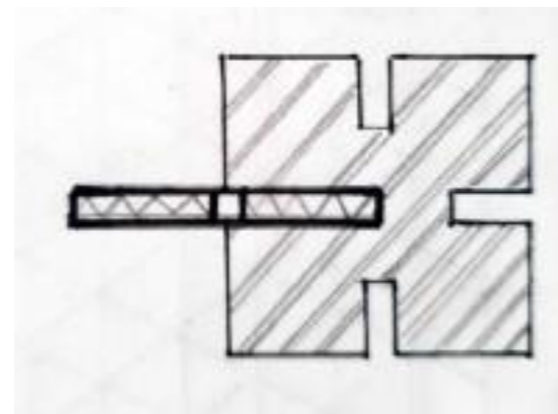
Front



Iso

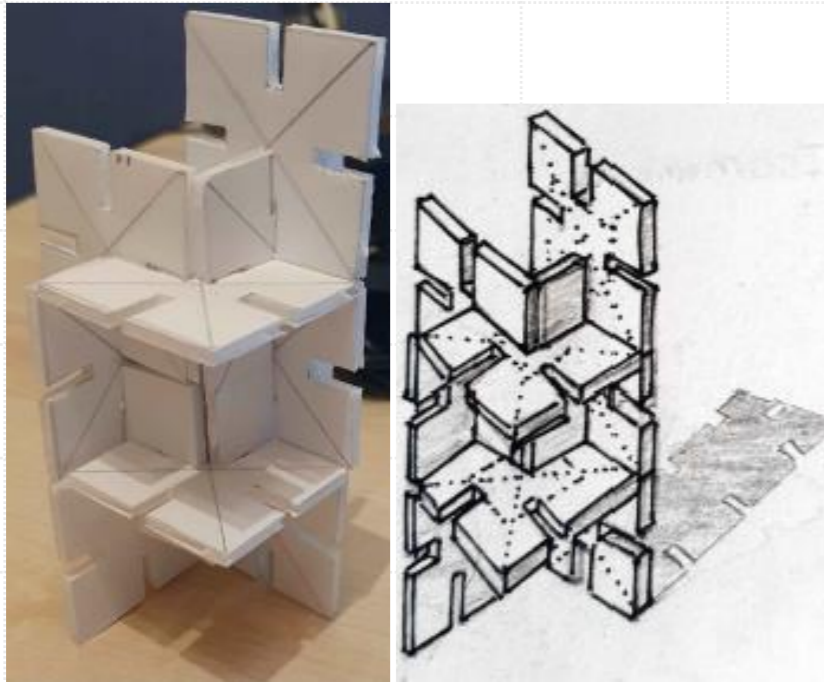


Top

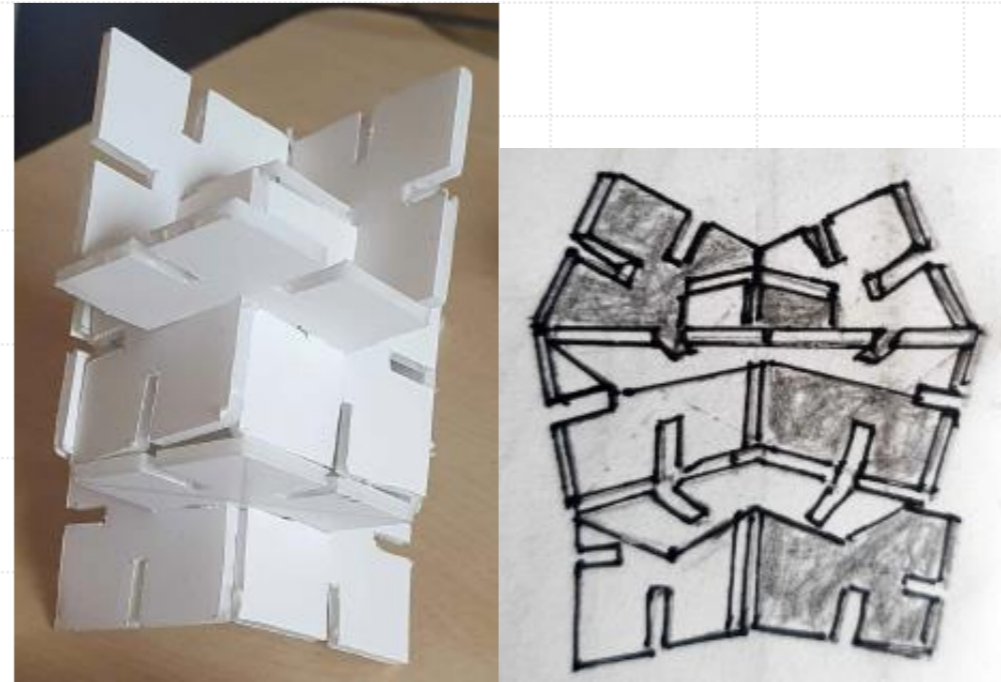


Assignment:
Create three versions of
the 13-component model.

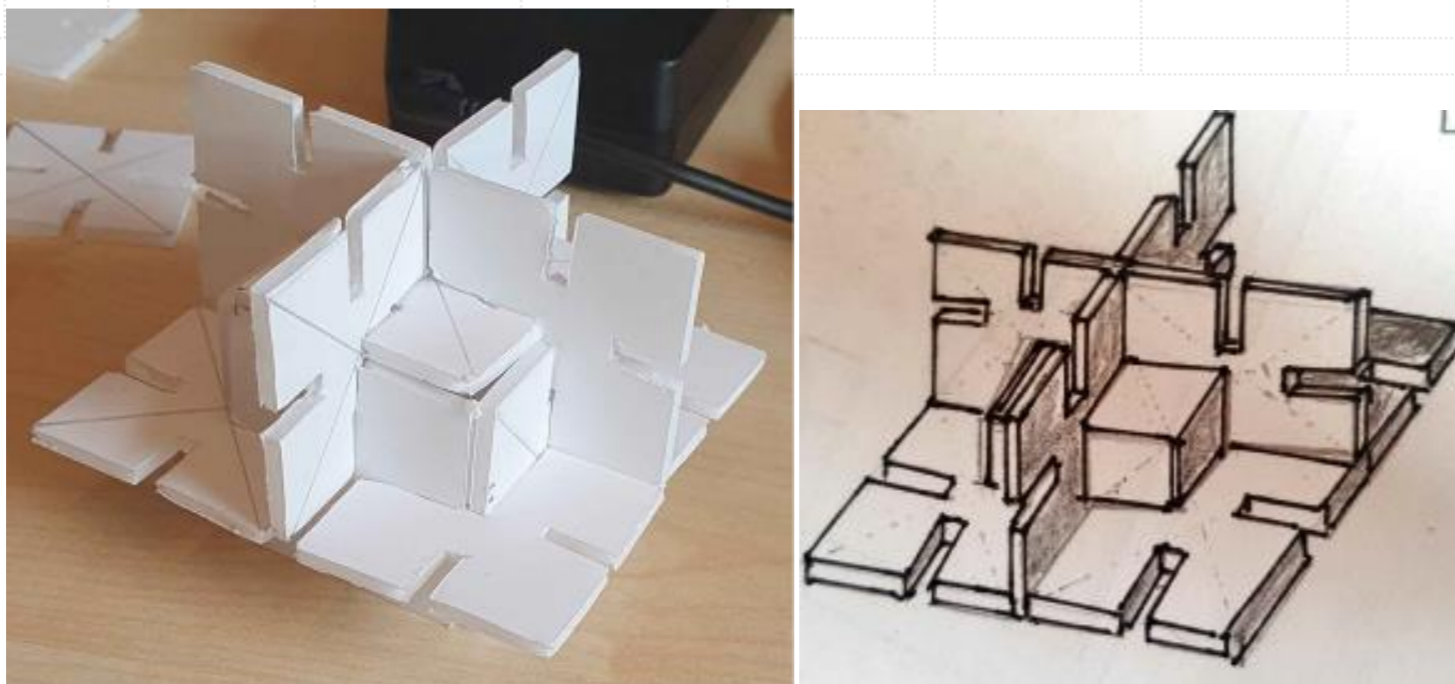
1.3 The MODEL



1.6 Model Option 1



1.7 Model Option 2



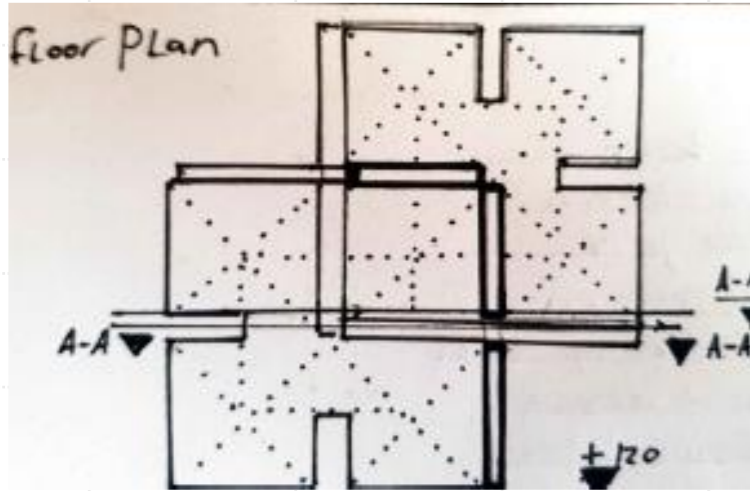
1.8 Model Option 3

Argumentation Choice
I choose to continue with figure 1. This figure is different from the first so it fits back and front the side to the right. This makes drawing harder and I will learn more.

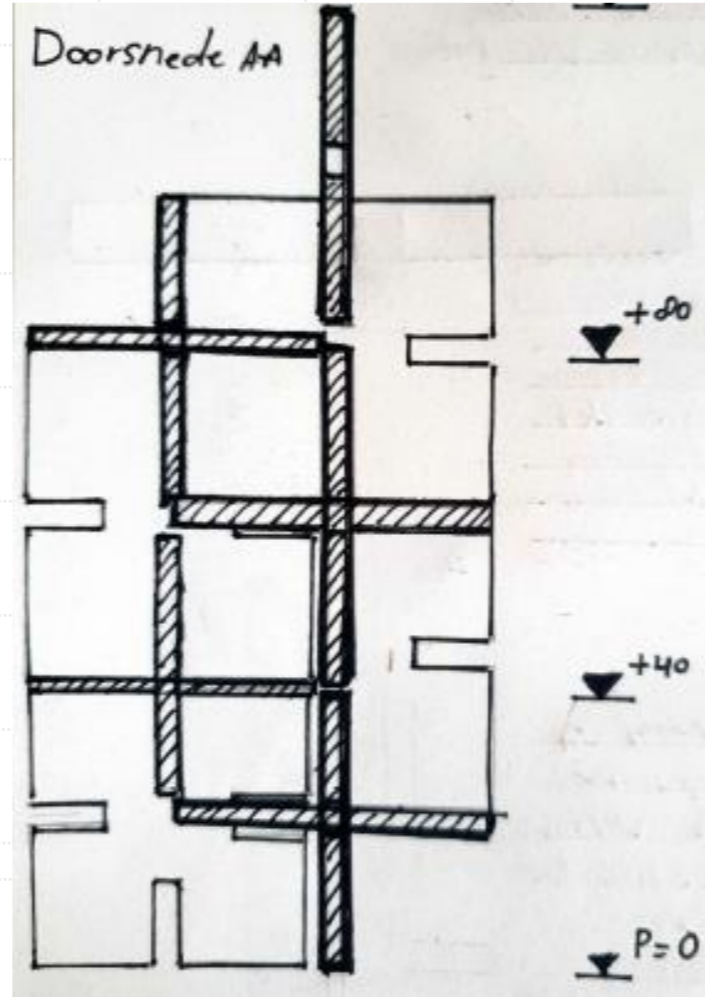
1.9 Model Choice Argumentation

Assignment:
Sketch a ortho-iso model
and technical drawings
with and without different
line thickness

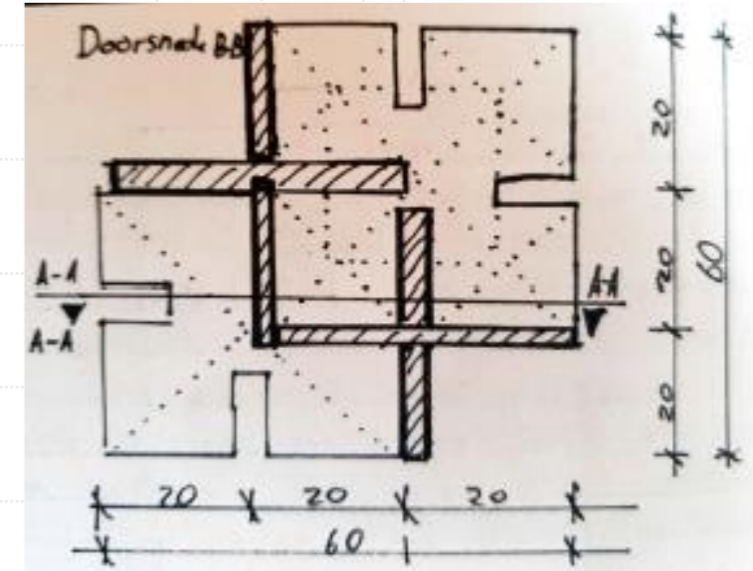
1.4.1 Graphic Expression MODEL



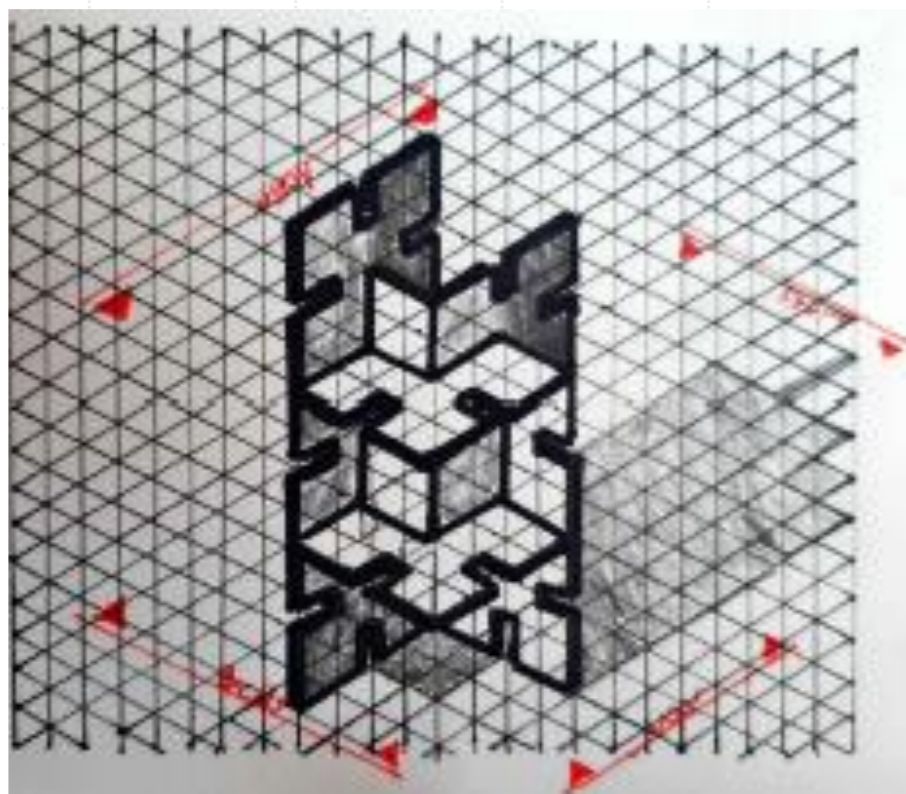
1.10 Floor Plan Model



1.11 Vertical Section A-A



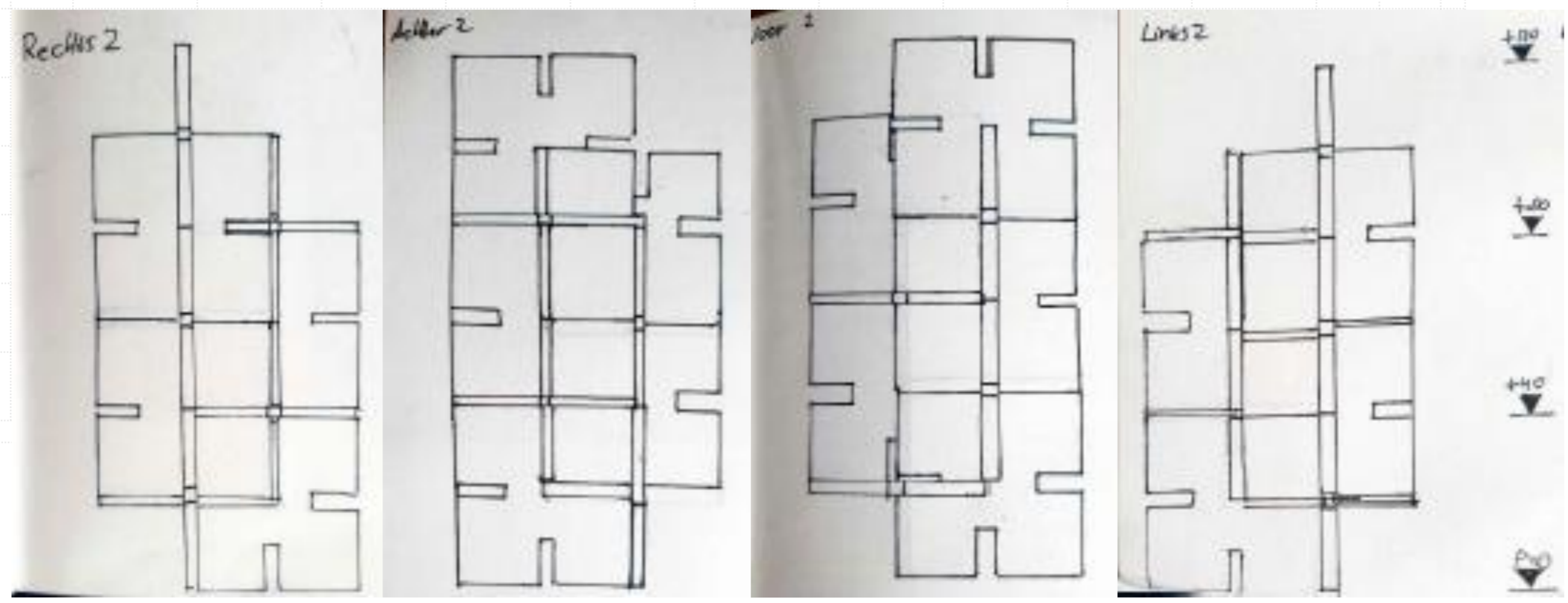
1.12 Horizontal Section B-B



1.13 Isometric Sketch Model

Assignment:
Sketch a ortho-iso model
and technical drawings
with and without different
line thickness

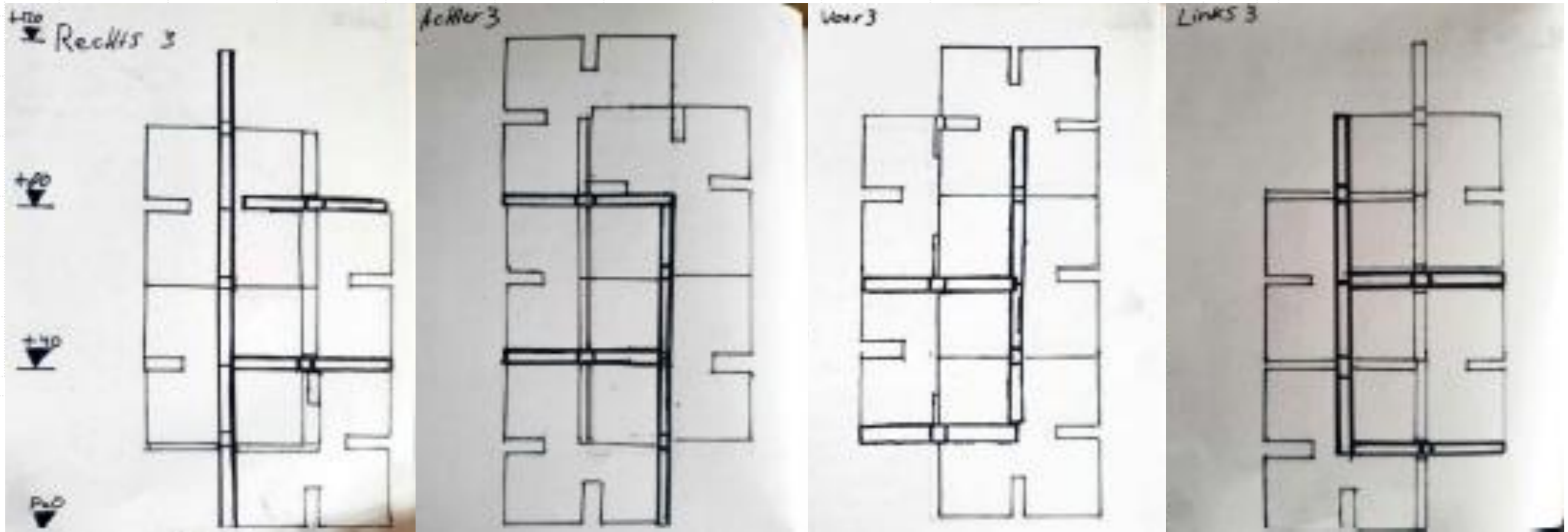
1.4.2 Graphic Expression MODEL



1.14 Orthographic projections with same line thickness

Assignment:
Sketch a ortho-iso model
and technical drawings
with and without different
line thickness

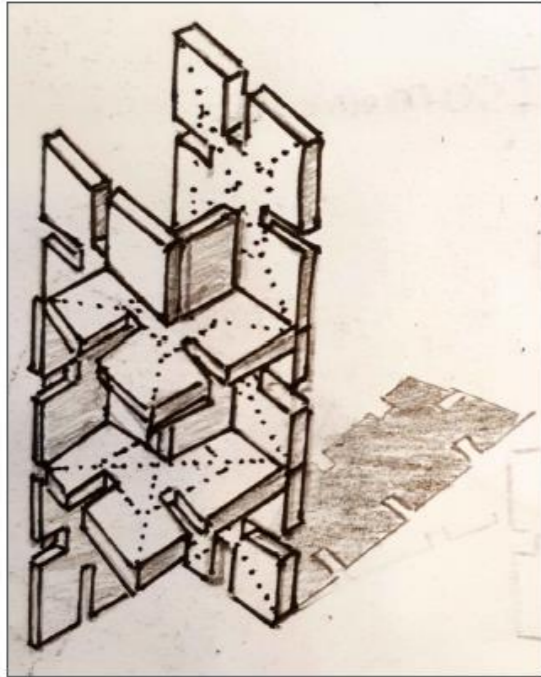
1.4.3 Graphic Expression MODEL



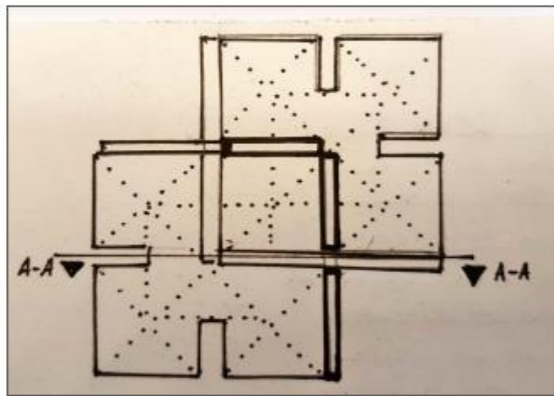
1.15 Orthographic projections with various line thickness

Assignment:
 Sketch a ortho-iso model
 and technical drawings
 with and without different
 line thickness

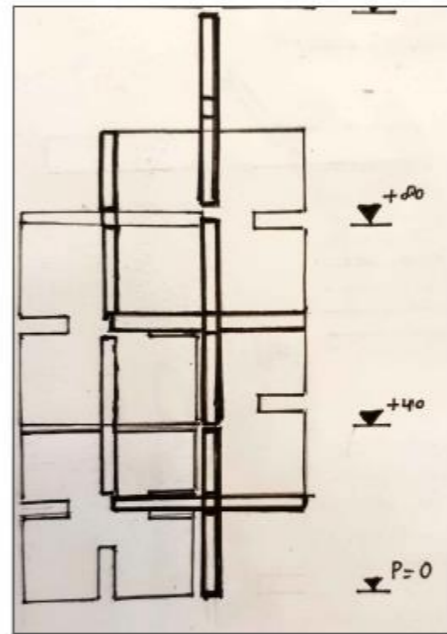
1.4.4 Graphic Expression MODEL



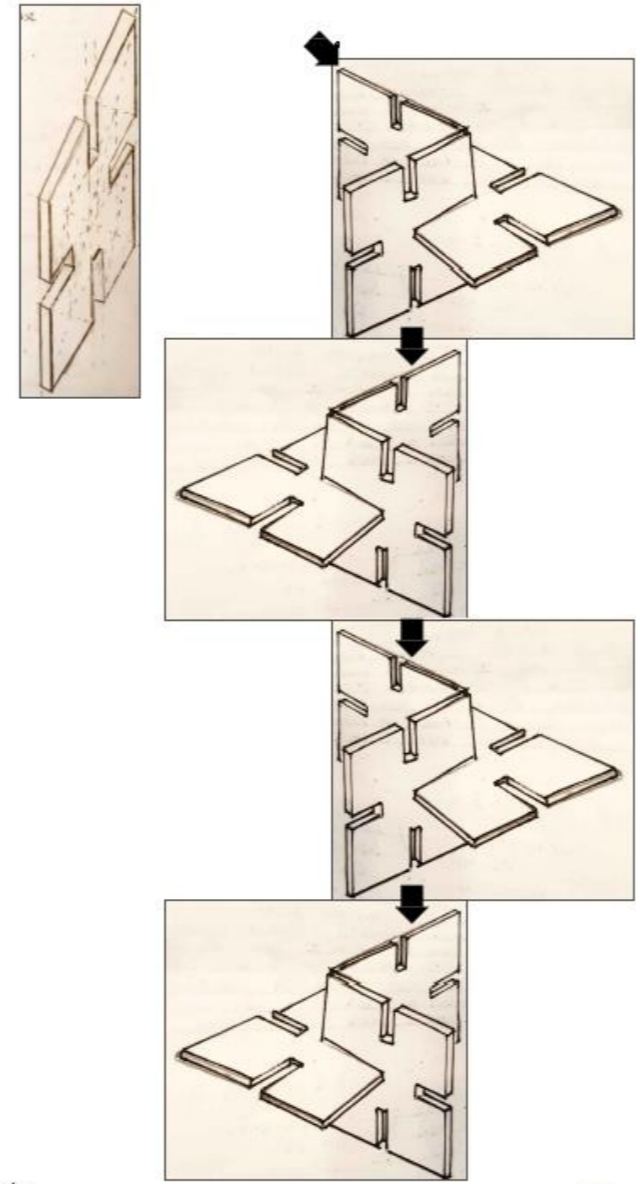
1.1 | Isometrie
 No scale provided



1.2 | Floor plan
 1:1



1.3 | Doorsnede
 1:1



opdrachtgever	P. Omlo	schaal
project	Element figures	formaat
fase	Concept	datum
onderwerp	Three different models with description	status
projectleider	P. Omlo	gewijzigd
tekenaar	Stefan Vujst	projectnr
		bladnr

C:\Users\Stefan\Desktop\VA3 figures.dwg

Exercise 1 part 1

Right



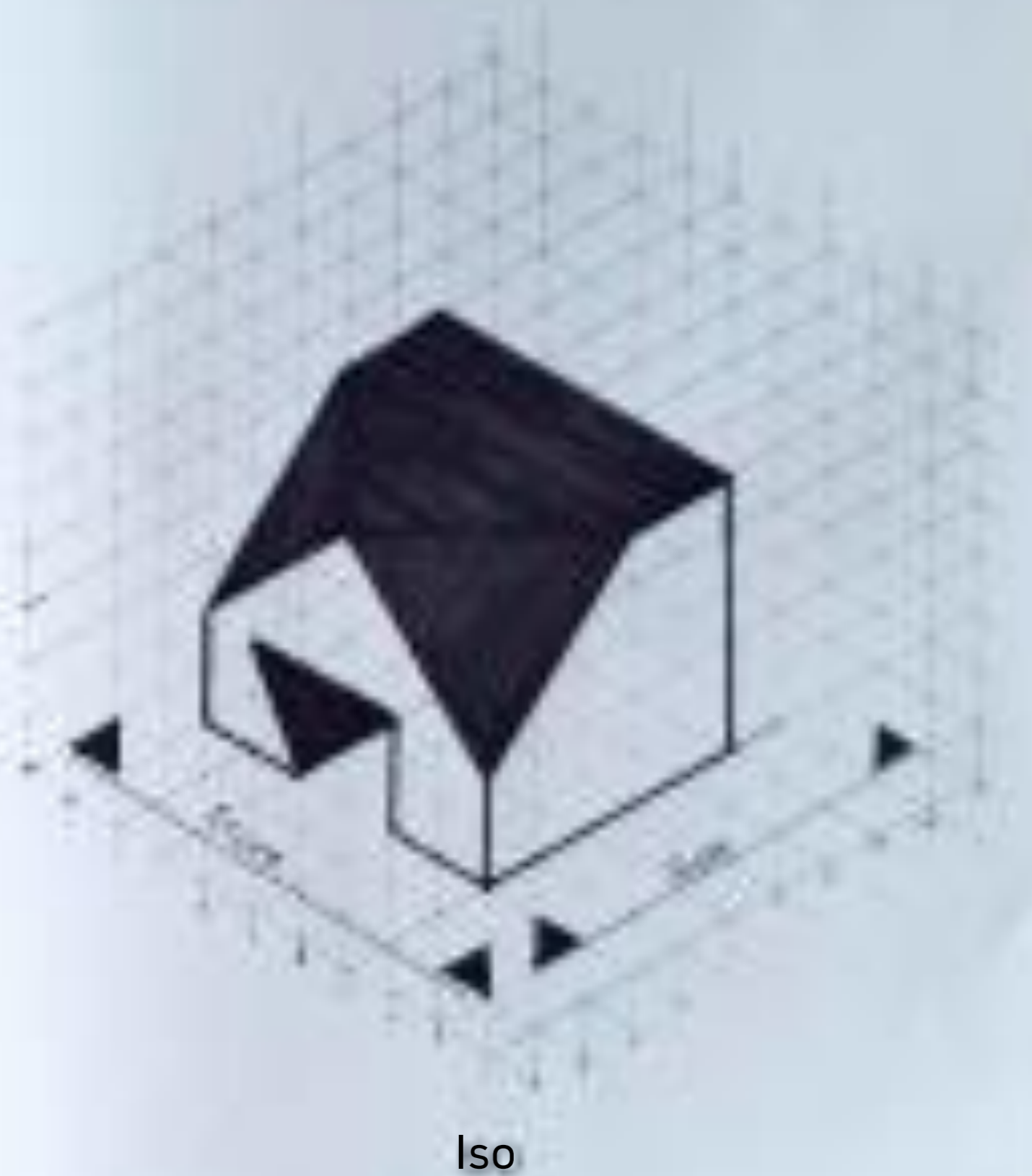
Front



Top

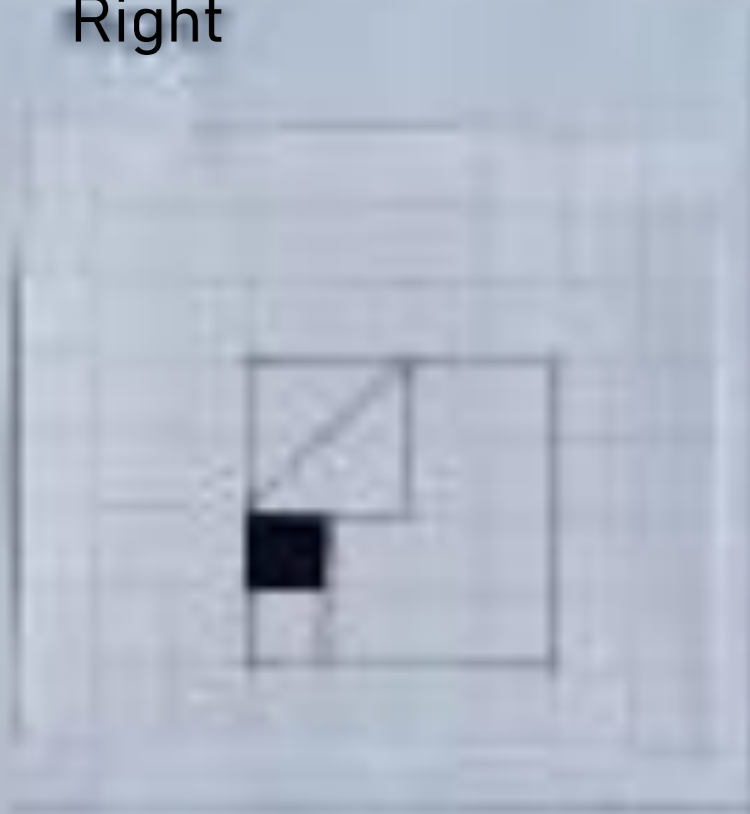


Assignment:
Draw 3 orthographic
projections out of a
isometric projection

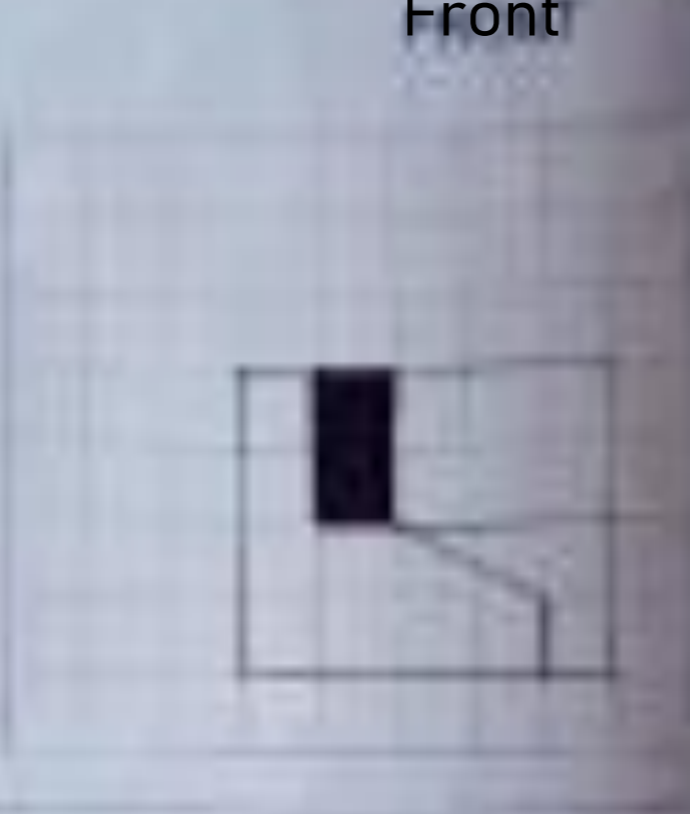


Exercise 1 part 2

Right



Front



Top



Assignment:
Draw 3 orthographic projections out of a isometric projection

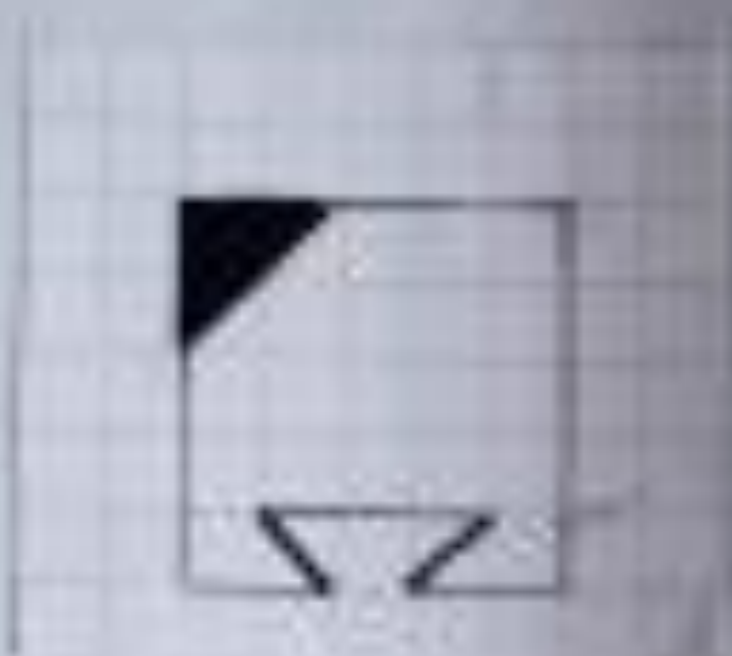


Iso

Exercise 1 part 3

Right

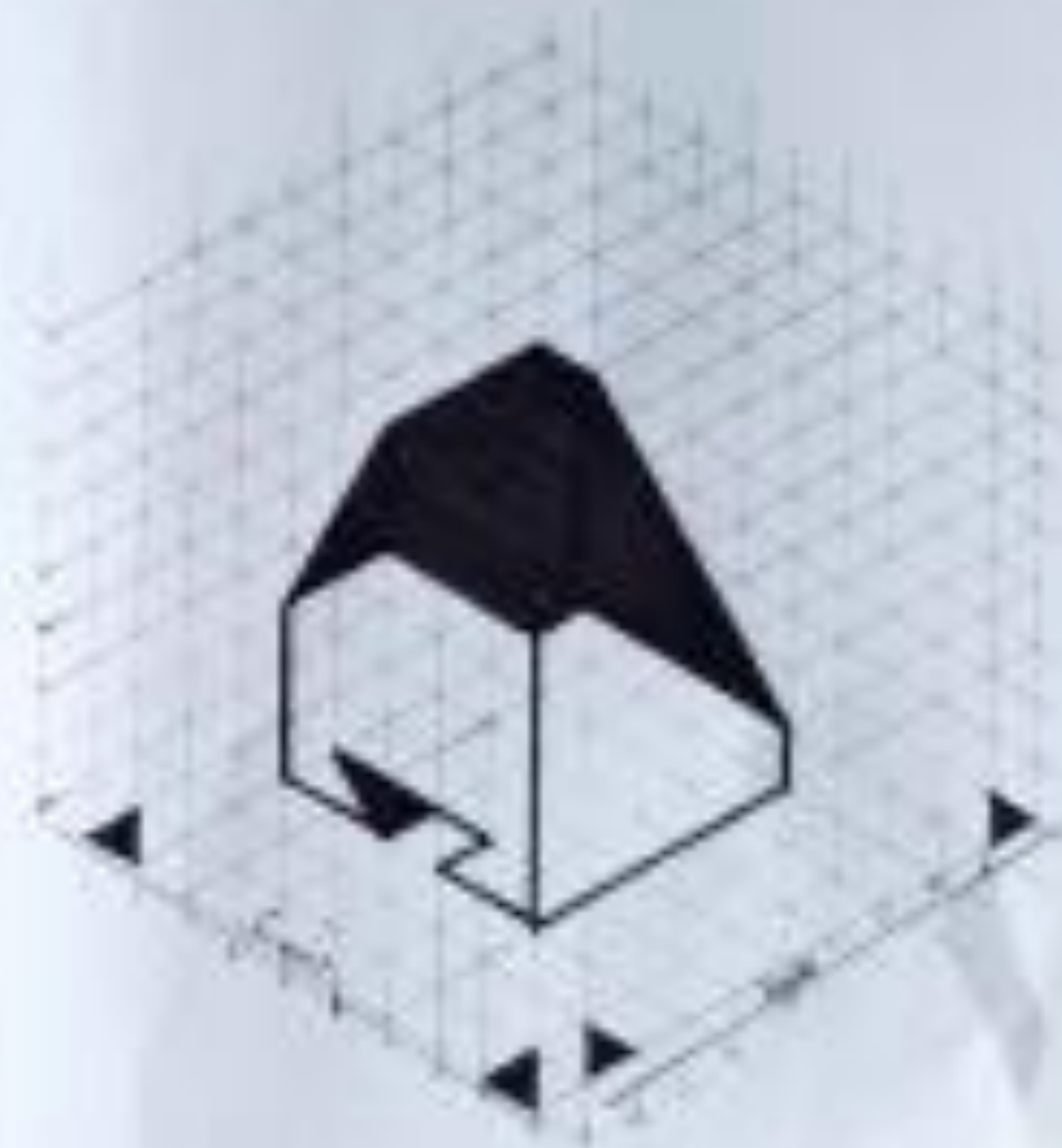
Front



Top

Assignment:

Draw 3 orthographic projections out of a isometric projection



Iso

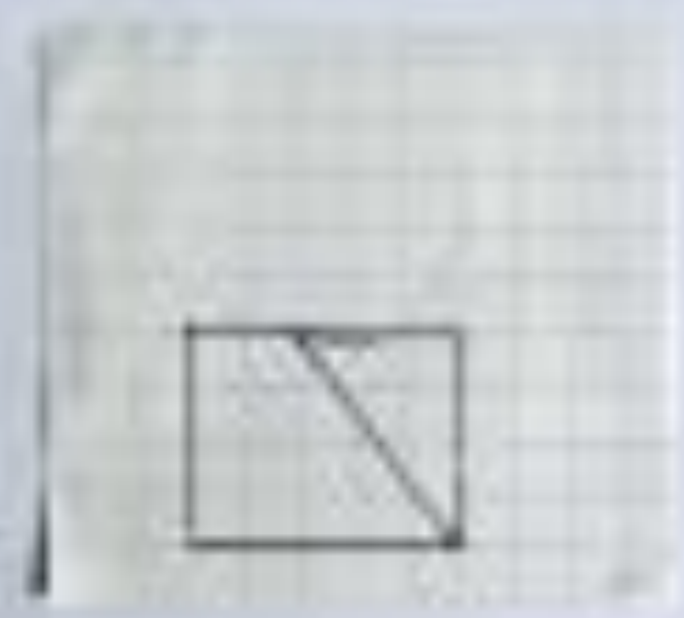
Assignment:
Draw 3 isometric
projections out of a
orthographic projection

Exercise 1 part 4

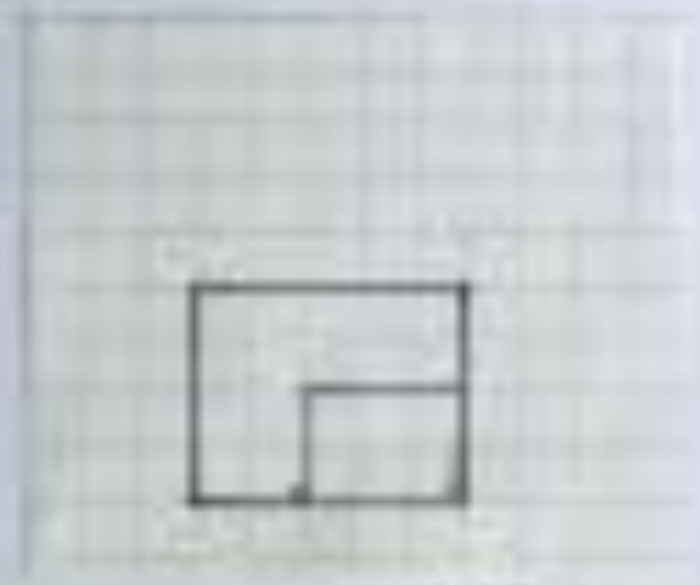
Right



Front



Top



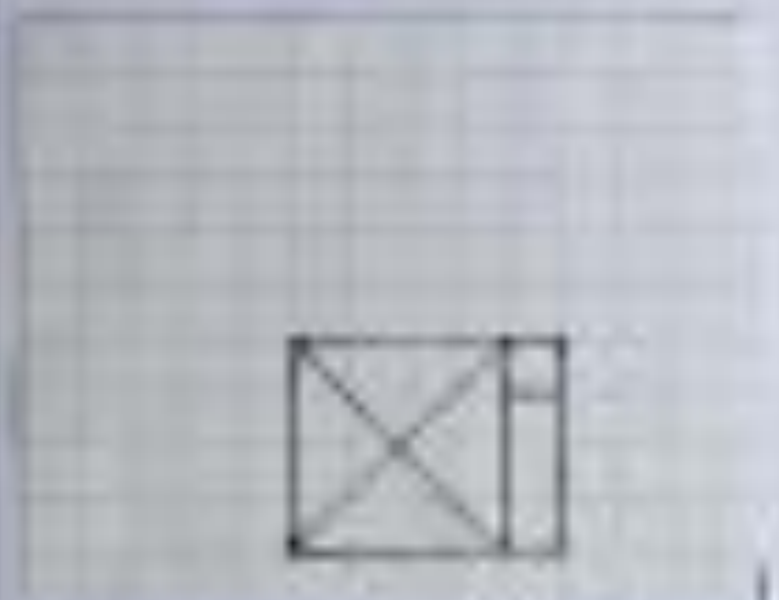
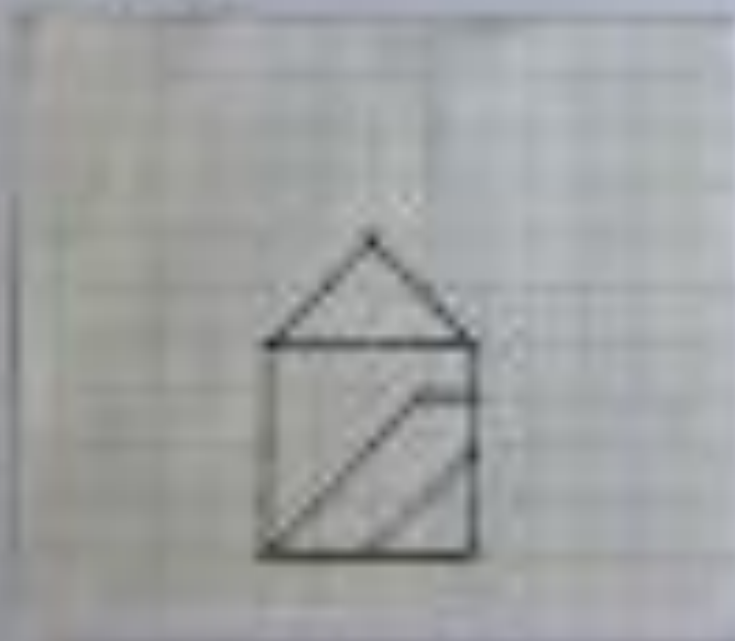
Iso

Exercise 1 part 5

Assignment:
Draw 3 isometric
projections out of a
orthographic projection

Right

Front



Top

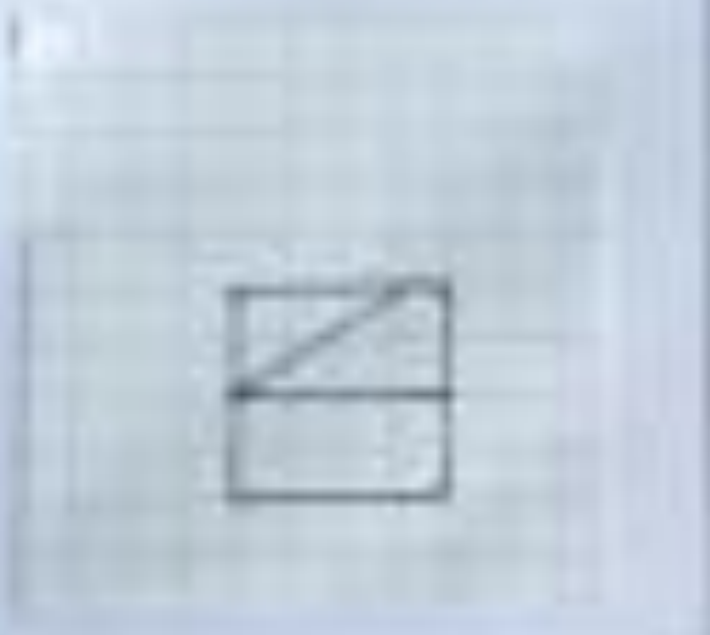


Iso

Exercise 1 part 6

Assignment:
Draw 3 isometric
projections out of a
orthographic projection

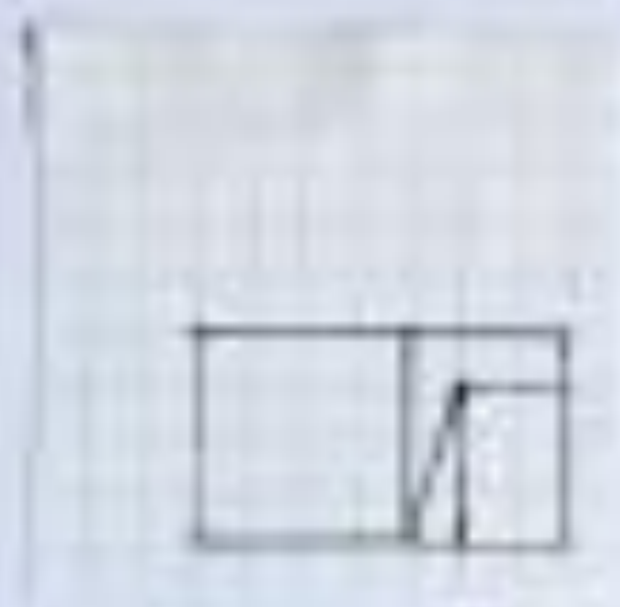
Right



Front



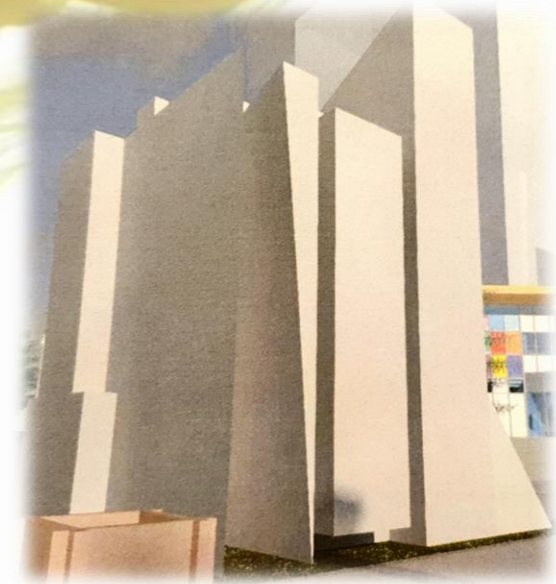
Top



Iso

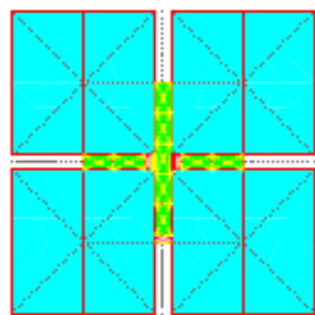
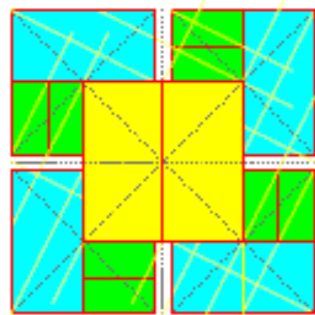
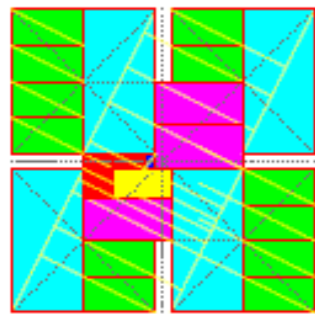
Week 2 (38)

Presentation

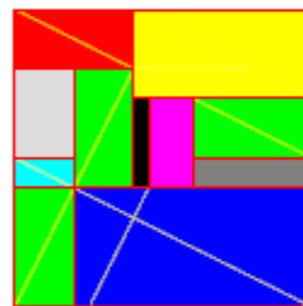
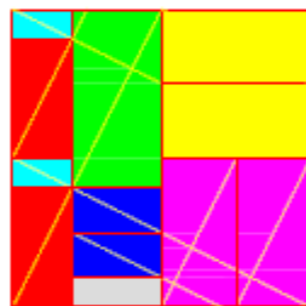
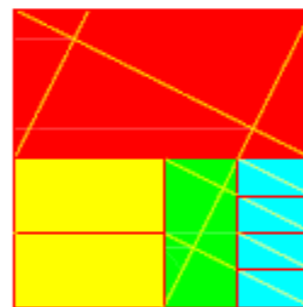
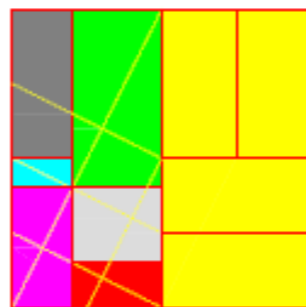
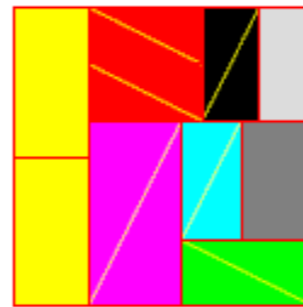
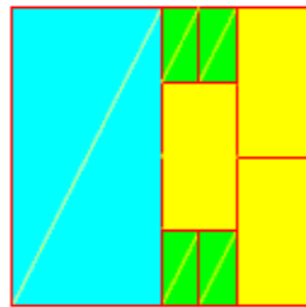


Assignment:
Sketch 9 Geometric
Analysis using the golden
ratio.

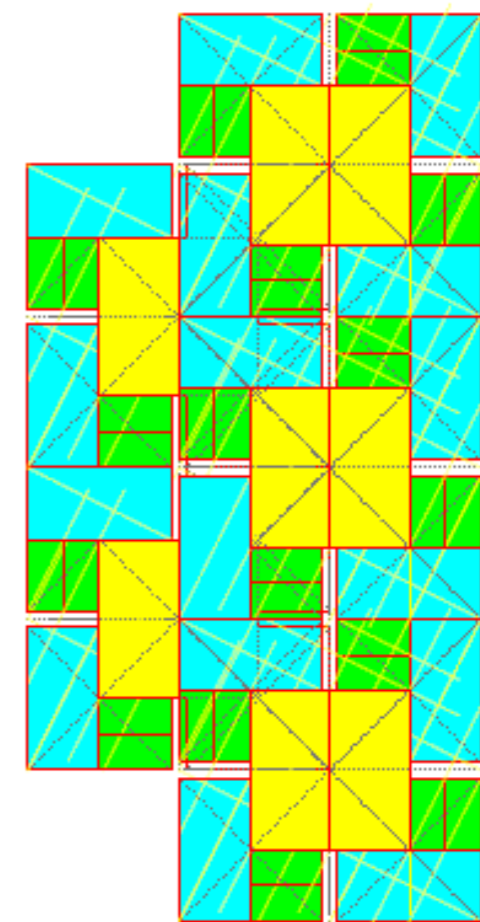
2.1 Geometric Analysis



2.1 Component with golden ratio



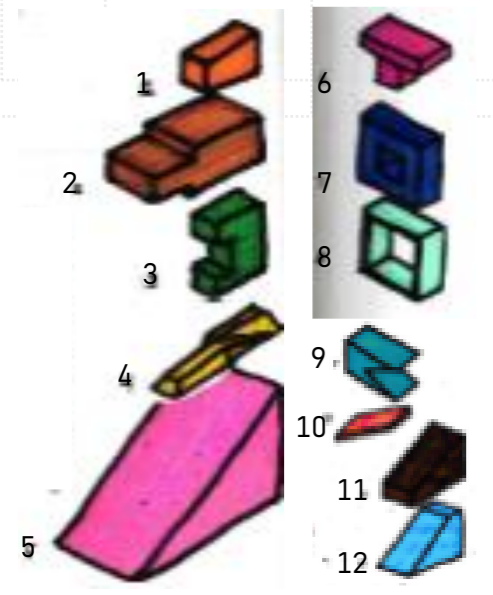
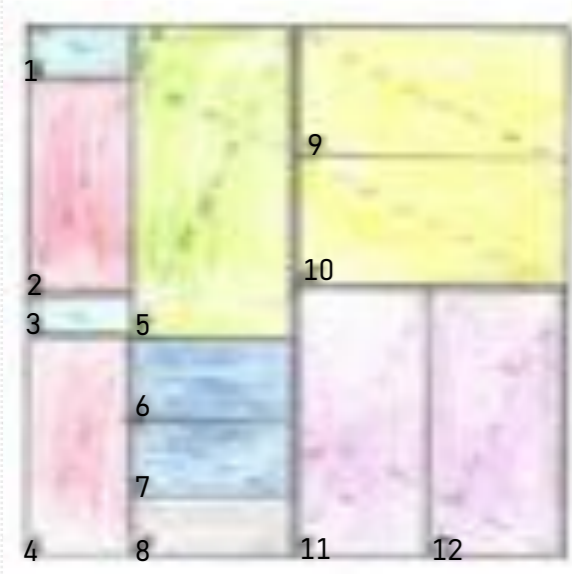
2.2 Golden Ratio Analysis in solid squares



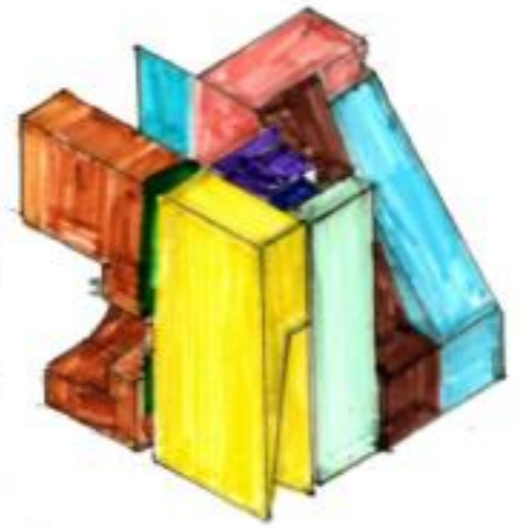
2.3 Golden Ratio Analysis in the Model

Assignment:
Create a model based on subtraction, addition and a combination of both.

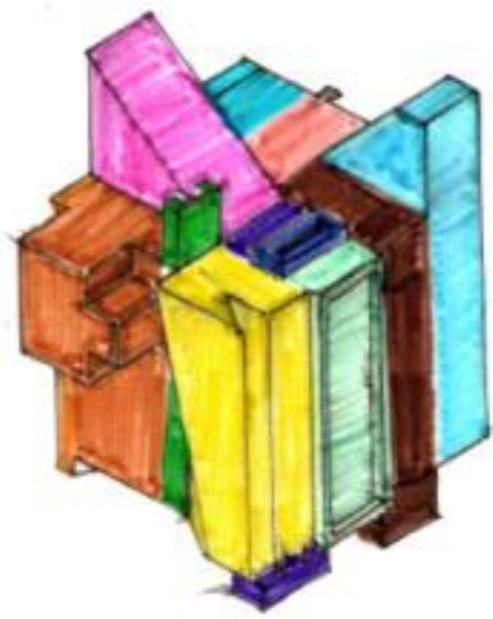
2.2 Transformation



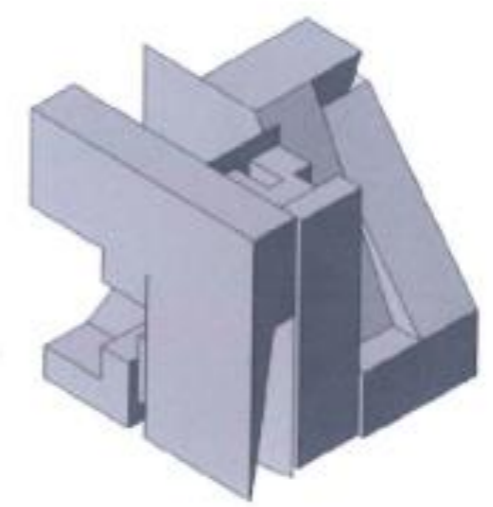
Subtractive



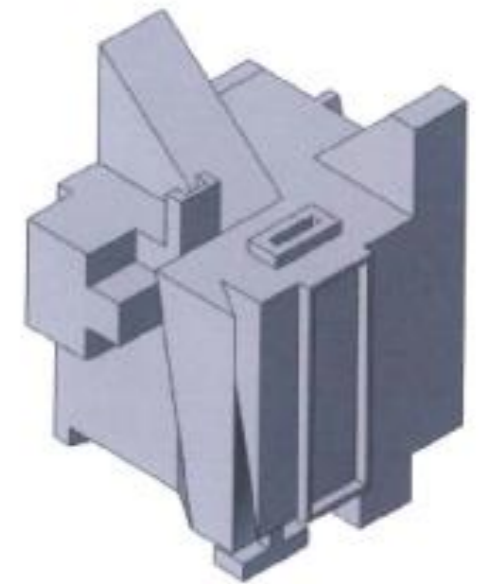
Additive



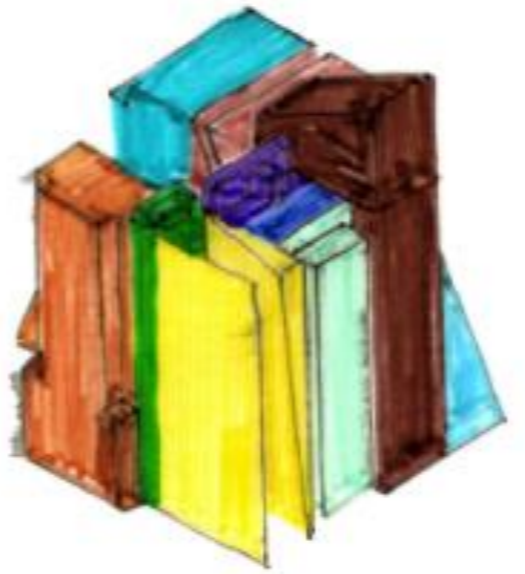
Subtractive



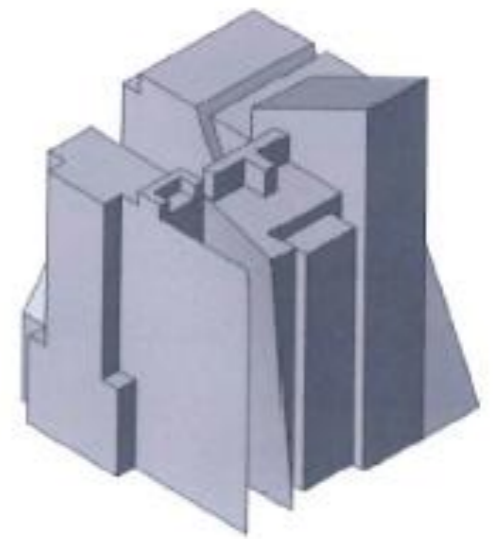
Additive



Combination



Combination



2.4 2D to 3D Transformation

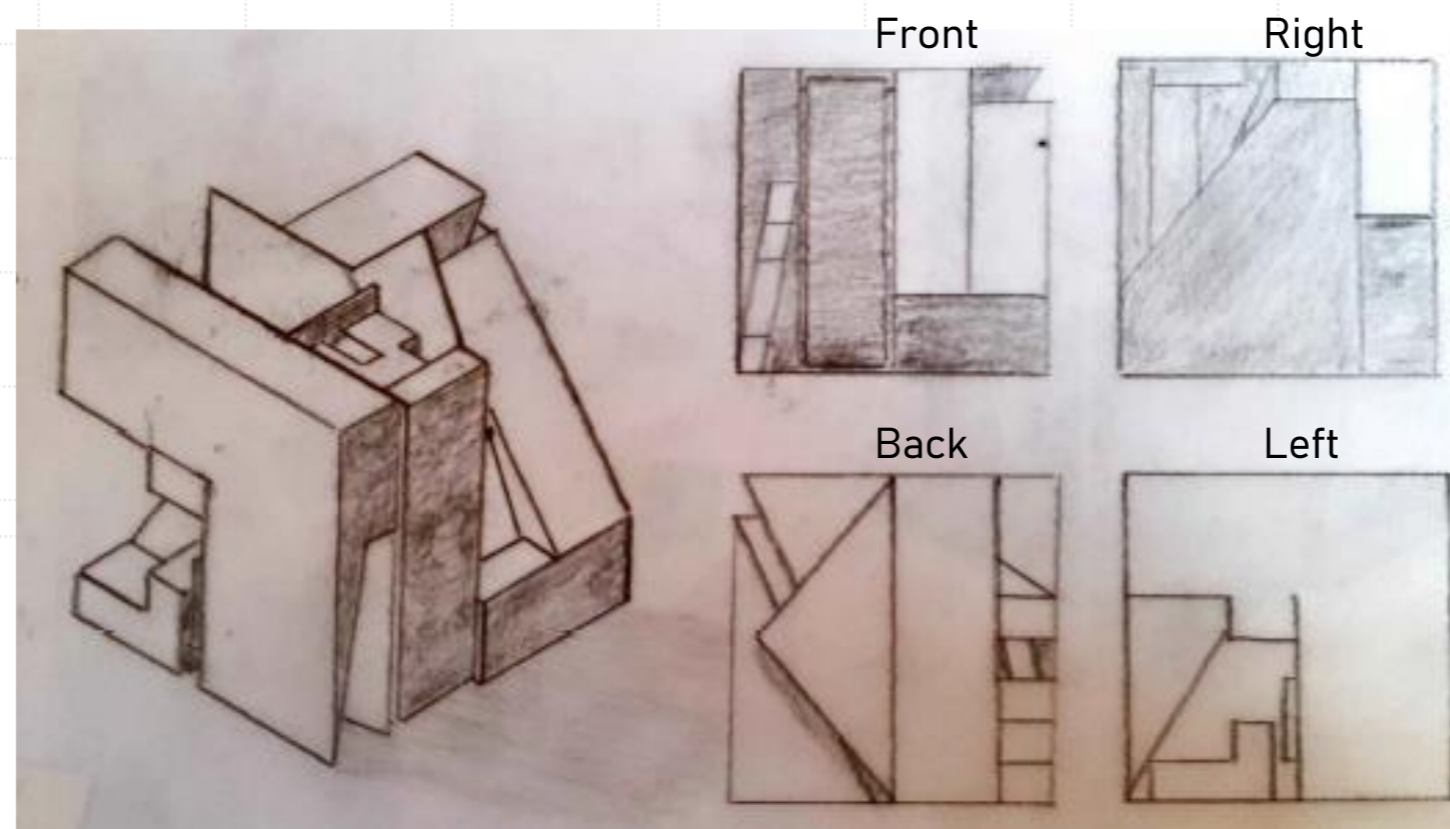
2.5 Adding or subtracting from the cube model

2.6 CAD models

Assignment:

Draw the isometric and orthographic projections of the model. Add also the technical drawings, the analysing and the diagrams.

2.3.1 Graphic Expression of the 3D MODEL

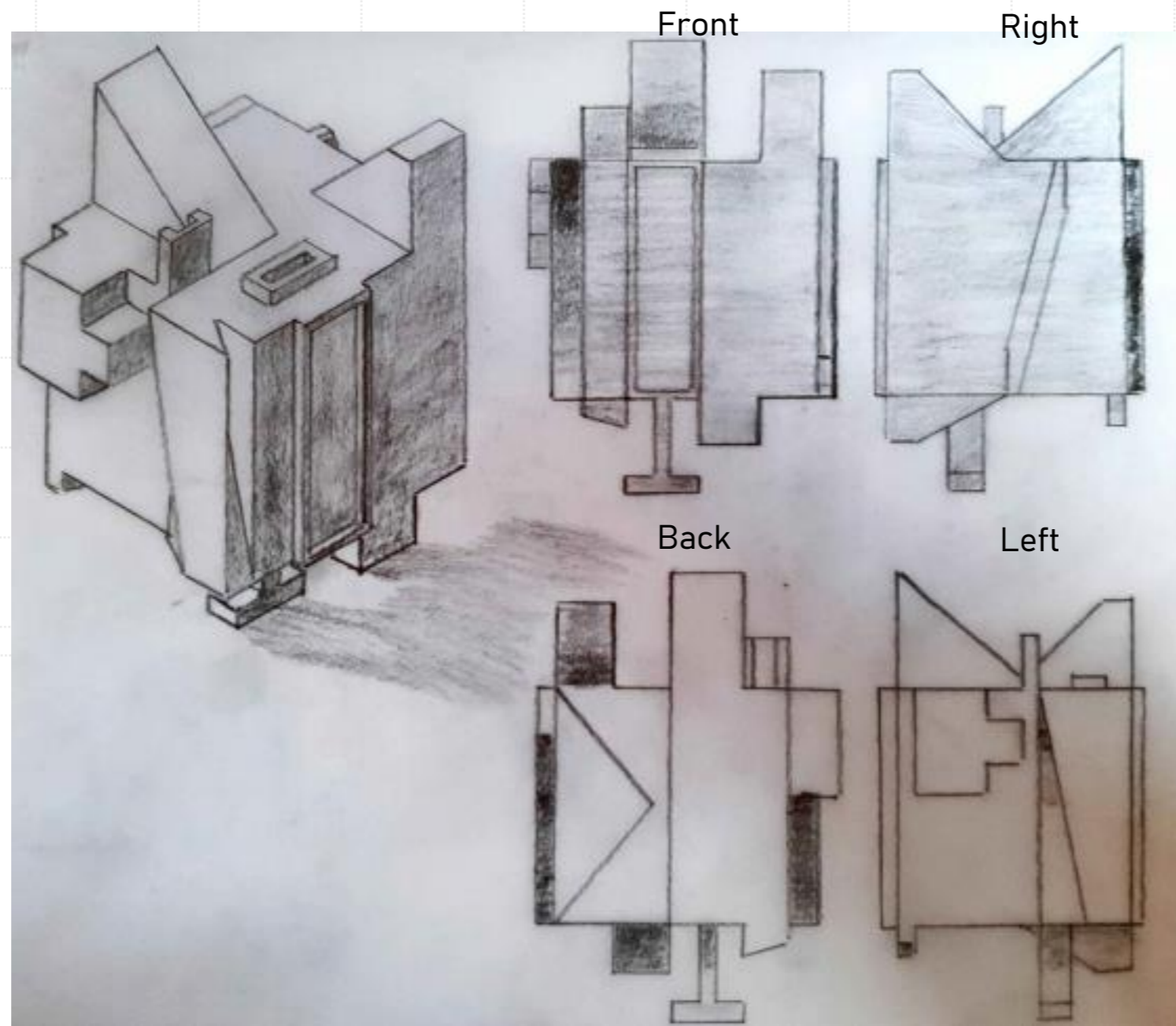


2.7 Isometric and orthographic projections of the subtractive model

2.3.2 Graphic Expression of the 3D MODEL

Assignment:

Draw the isometric and orthographic projections of the model. Add also the technical drawings, the analysing and the diagrams.

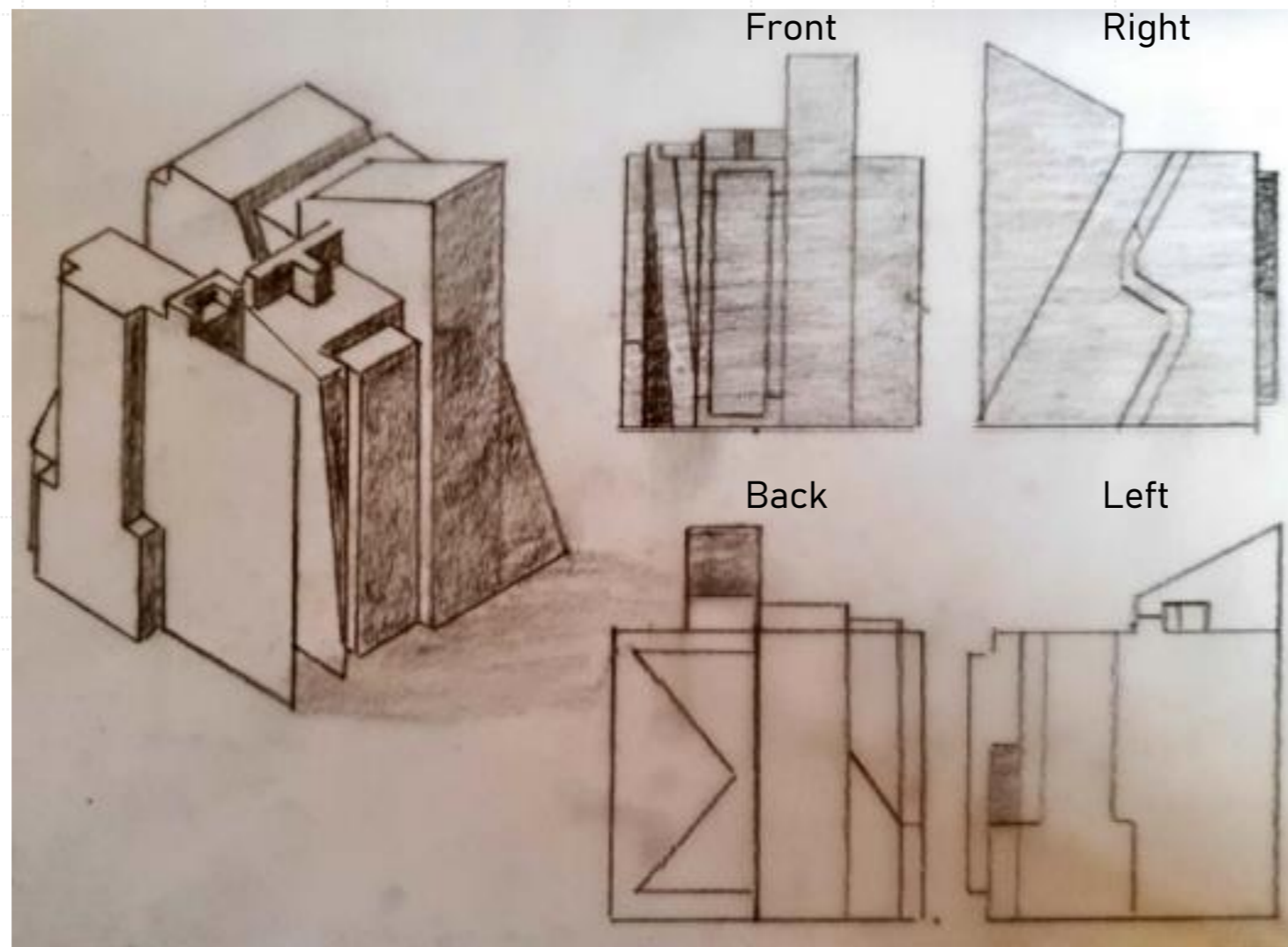


2.8 Isometric and orthographic projections of the additive model

2.3.3 Graphic Expression of the 3D MODEL

Assignment:

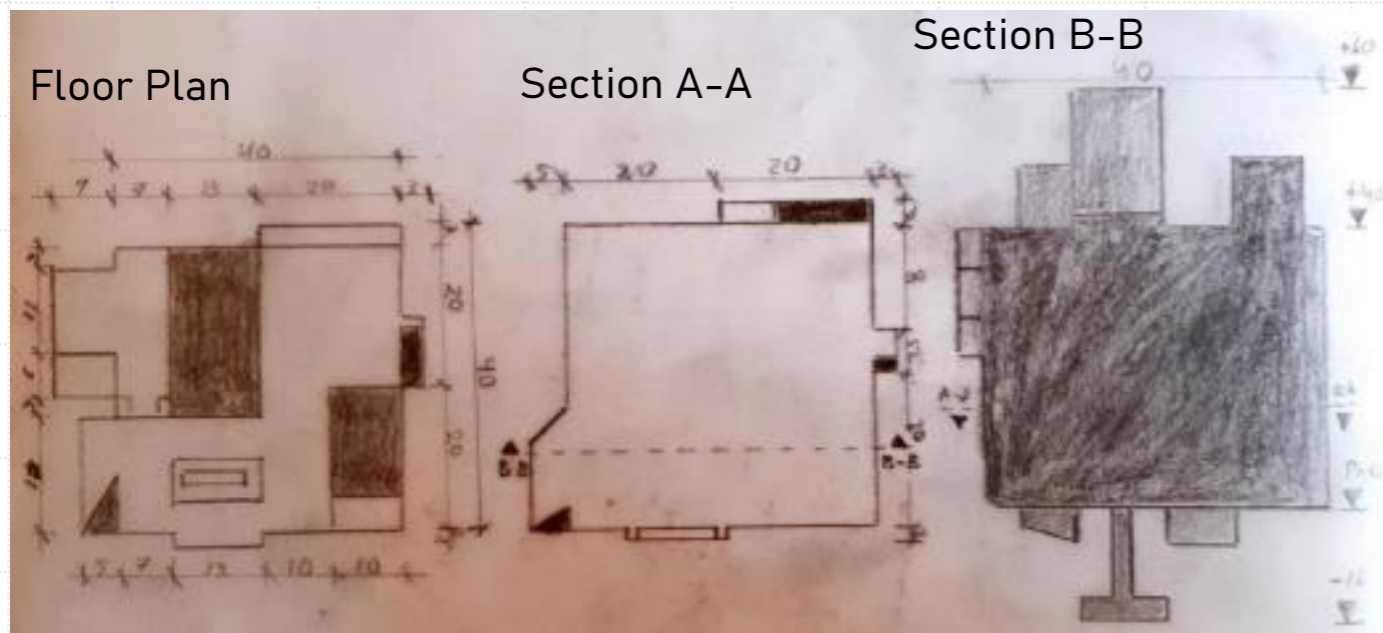
Draw the isometric and orthographic projections of the model. Add also the technical drawings, the analysing and the diagrams.



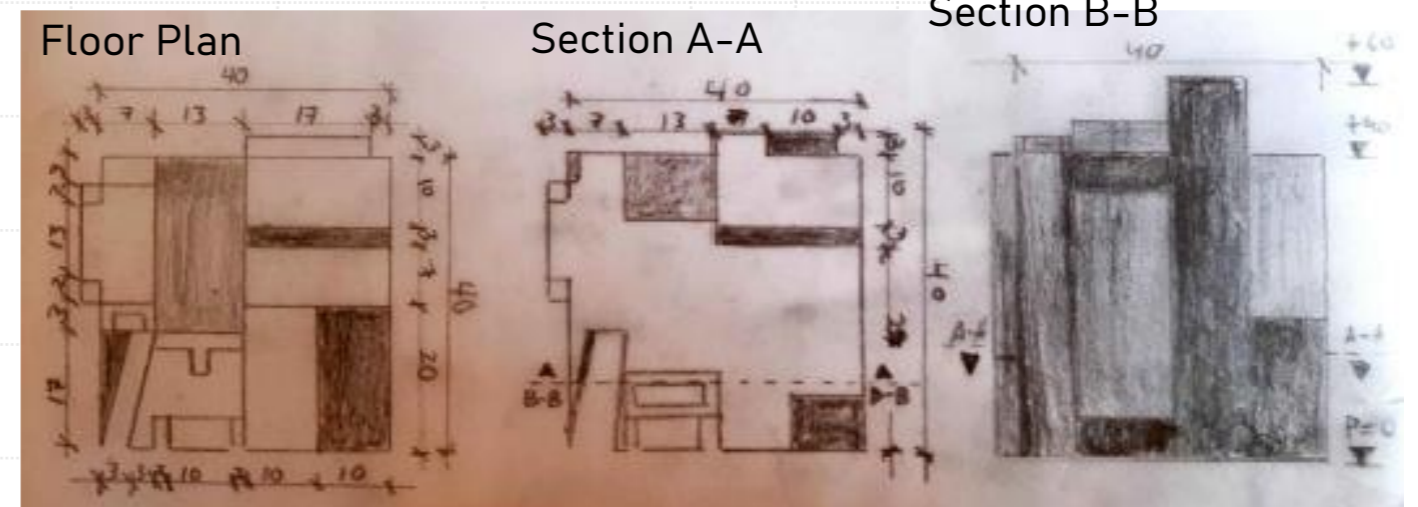
2.9 Isometric and orthographic projections of the combination model

Assignment:
 Draw the isometric and orthographic projections of the model. Add also the technical drawings, the analysing and the diagrams.

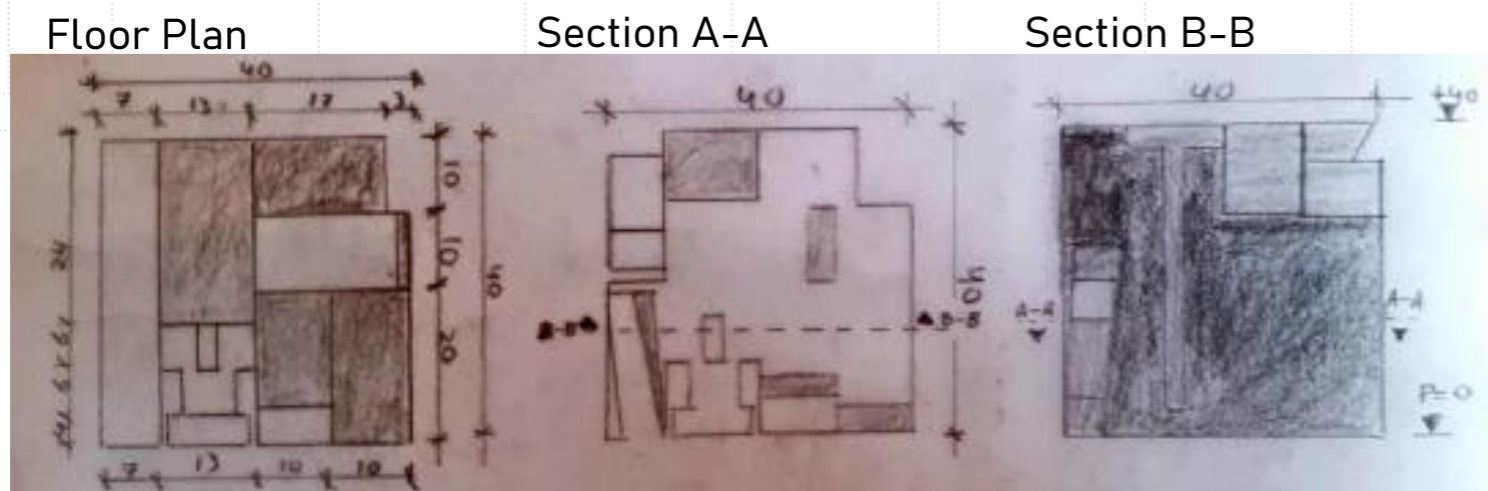
2.3.4 Graphic Expression of the 3D MODEL



2.10 Technical Drawings Additive Model



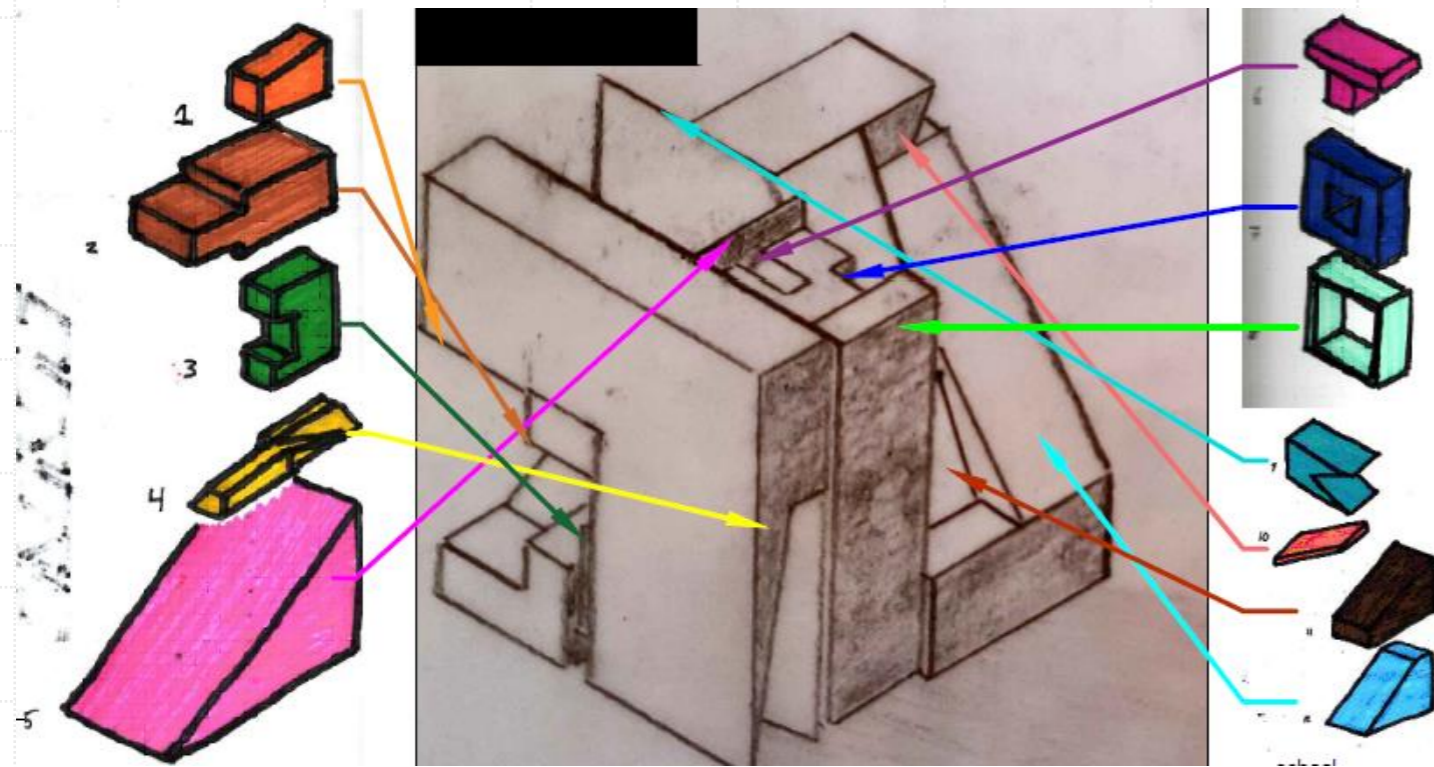
2.11 Technical Drawings Combination Model



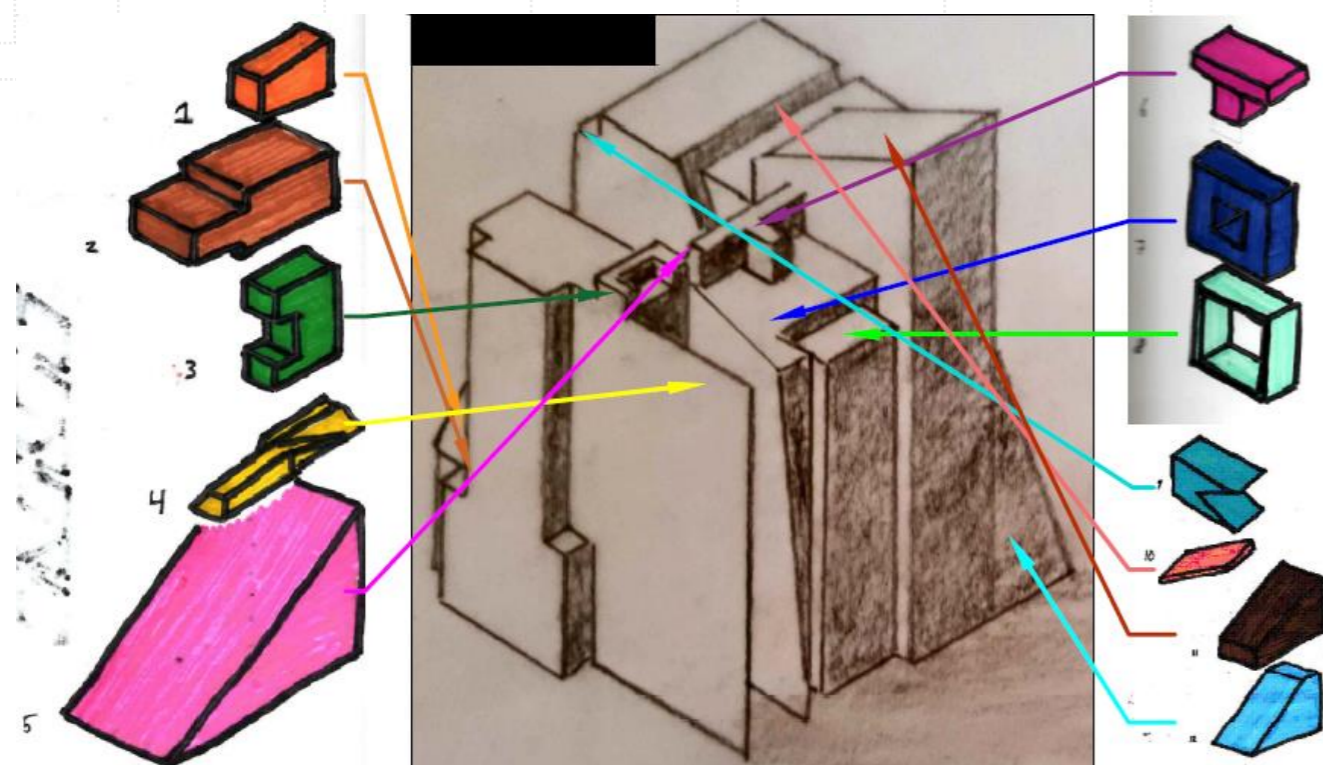
2.12 Technical Drawings Subtractive Model

Assignment:
Draw the isometric and orthographic projections of the model. Add also the technical drawings, the analysing and the diagrams.

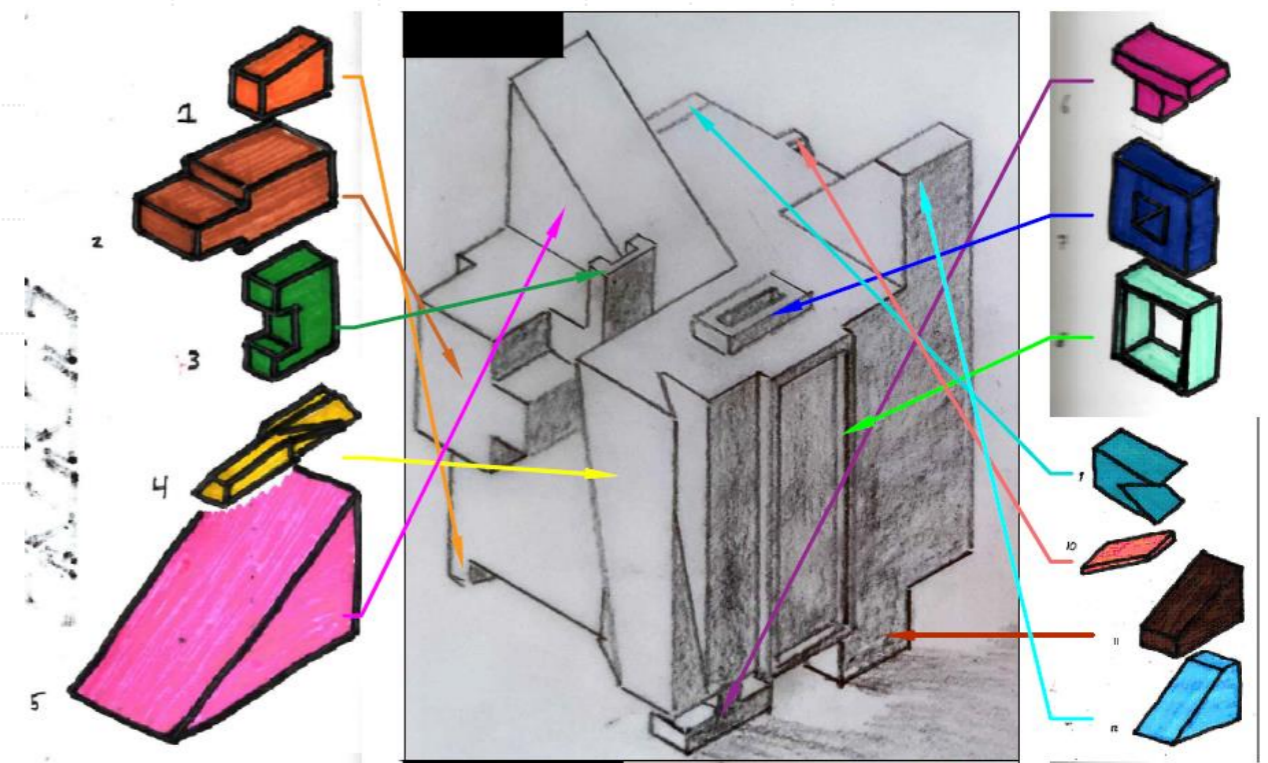
2.3.4 Graphic Expression of the 3D MODEL



2.13 Structure Subtractive Model



2.15 Structure Combination Model

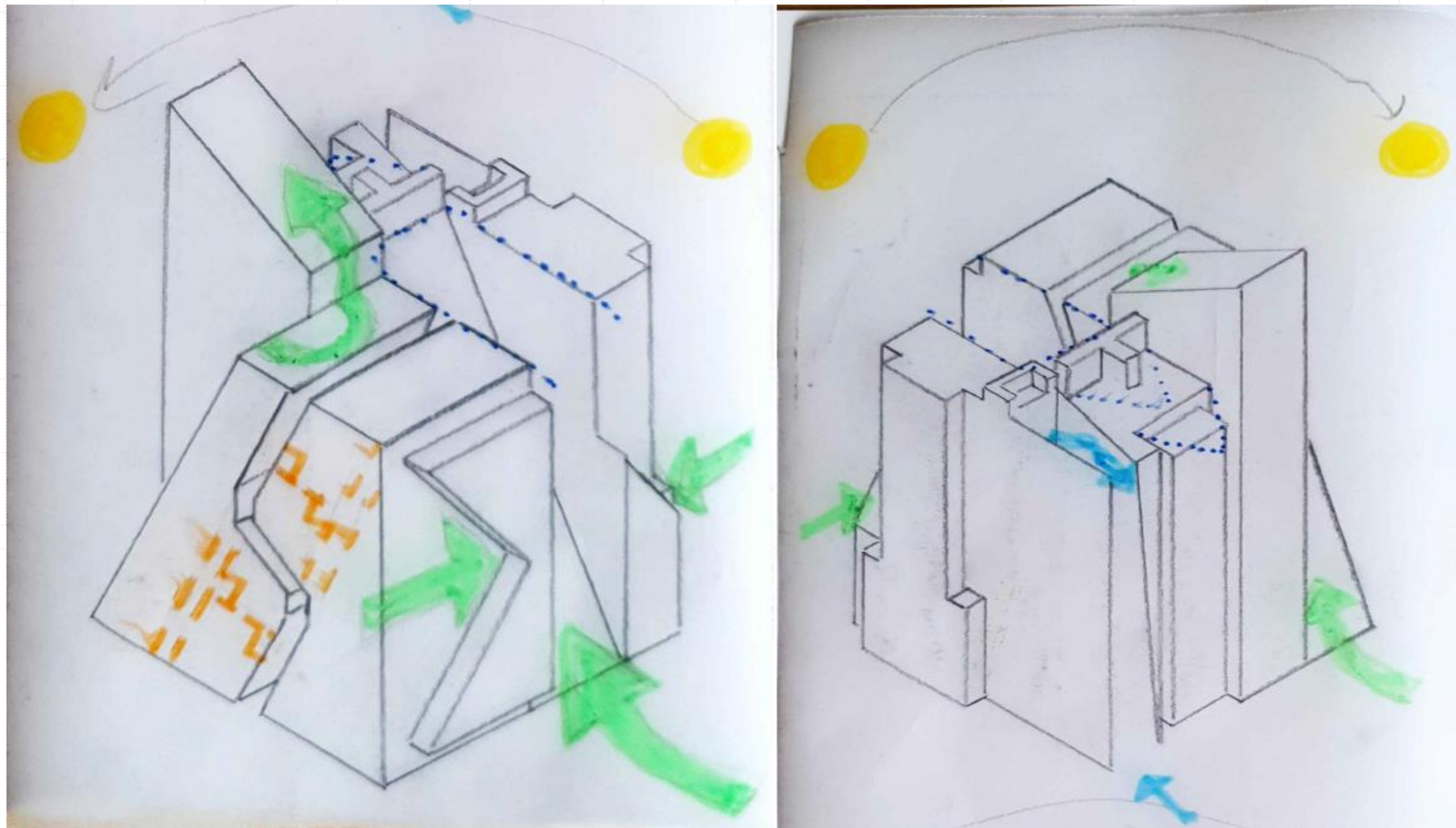


2.14 Structure Additive Model

Assignment:

Draw the isometric and orthographic projections of the model. Add also the technical drawings, the analysing and the diagrams.

2.3.4 Graphic Expression of the 3D MODEL



2.16 Explanation of the Combination Model by using diagrams

High-rise doesn't have to be square

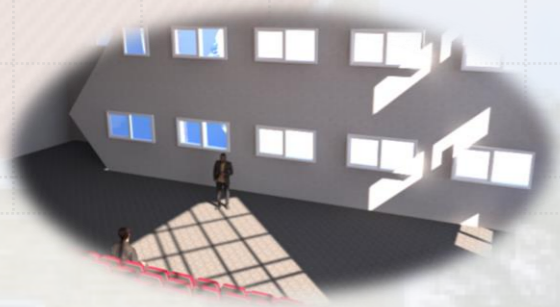
This design was created in collaboration with the Hanze University of Applied Sciences.



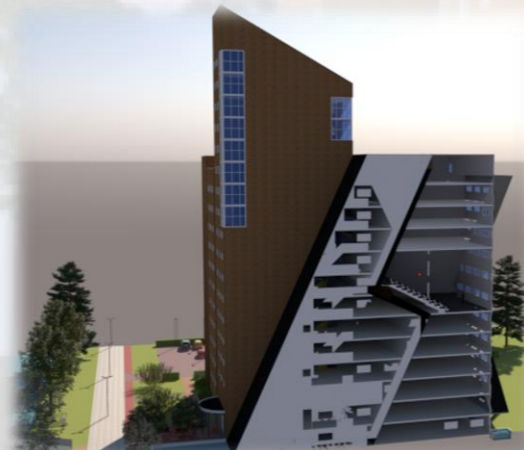
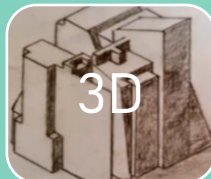
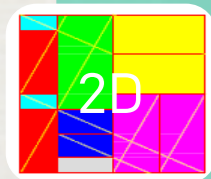
The picture on the right shows a building what was designed by the golden ratio method. The building was formed by subtraction and addition from a cube. The final design was drawn in SketchUp and rendered with V-RAY 5.

The exterior is designed by substrating or adding different shapes obtained from the golden ratio. The main goal was to make the cube no longer be experienced as a cube.

The interior was built around an open stairwell, creating a connected atmosphere between the different floors. The stairwell is created around a central tree.



The building contains several types of rooms and also a large hall for presentations or lectures.

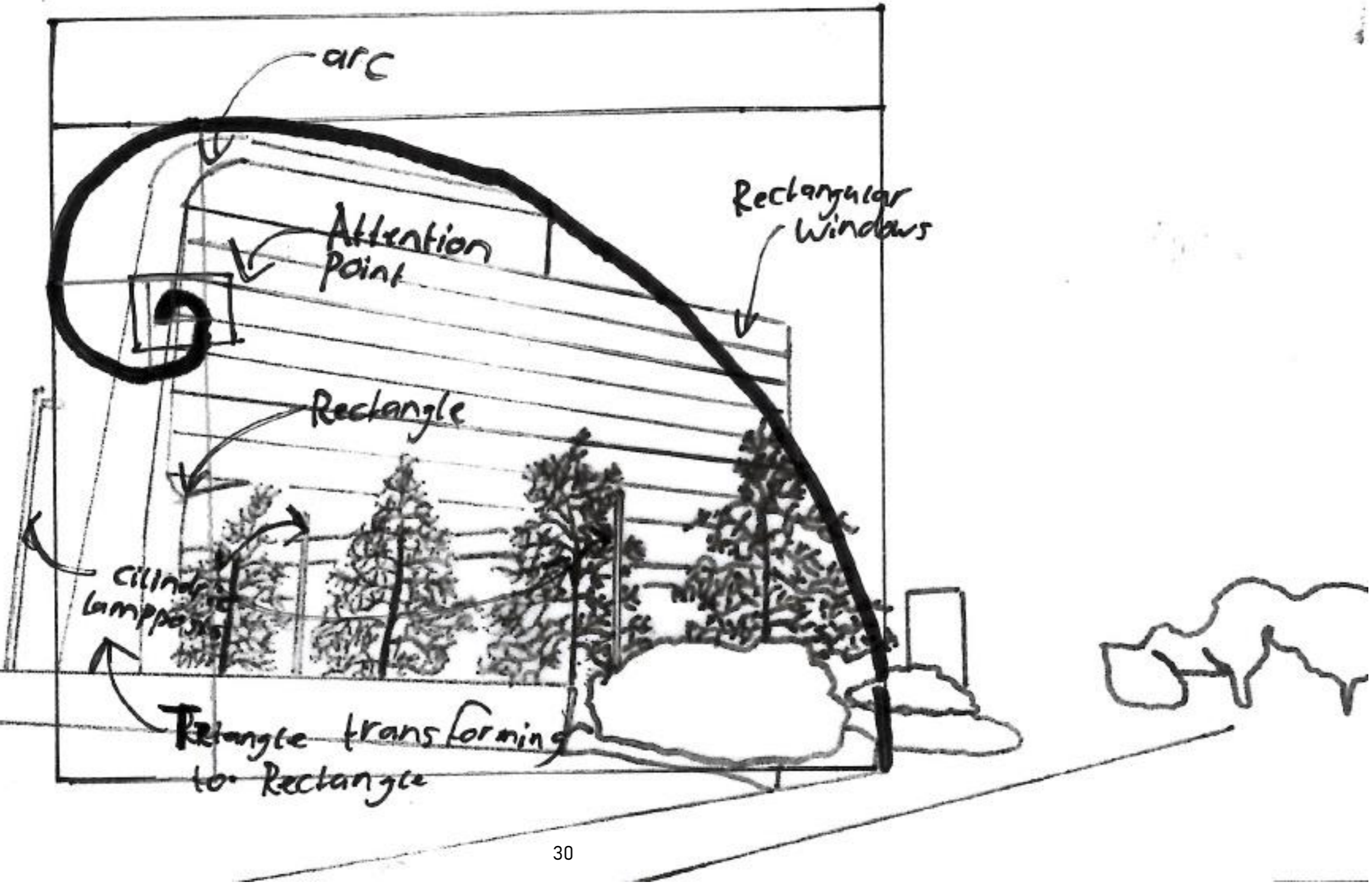


Section right facade



Assignment:
Sketch your surrounding
and analyse the
geometrics with the
golden ratio

Exercise 2 part 1

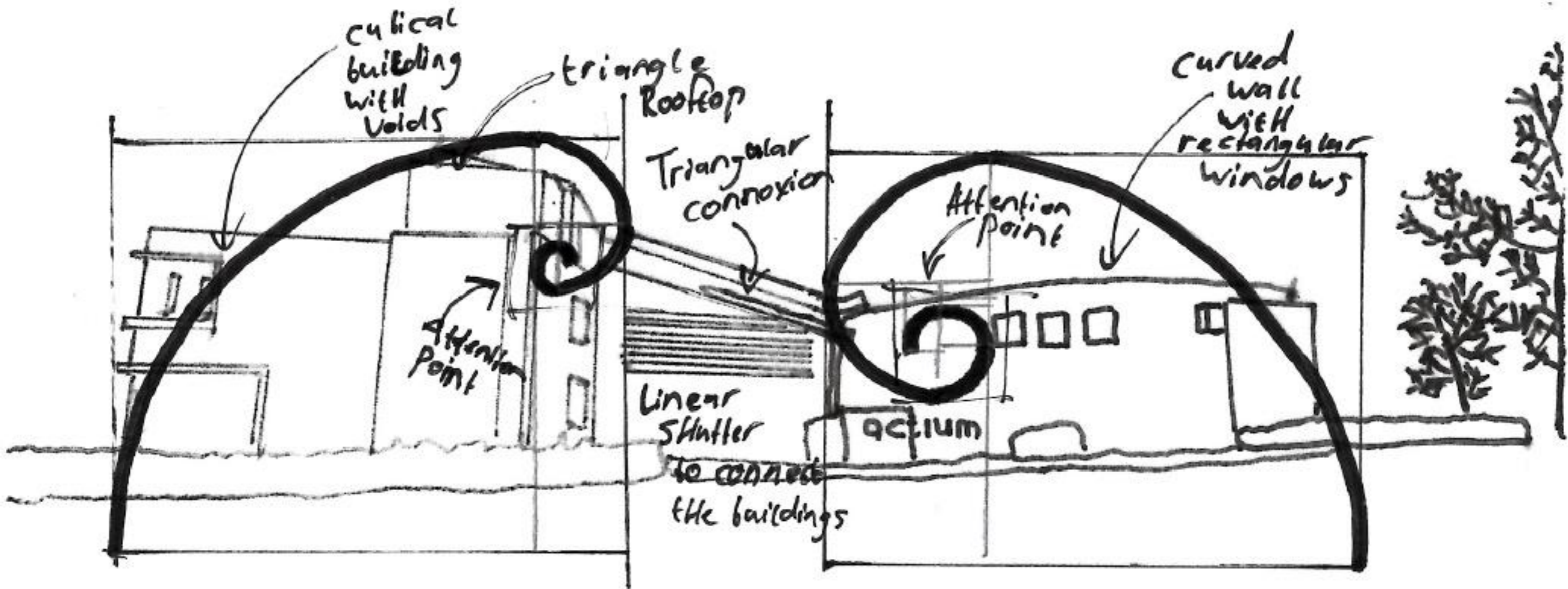


Assignment:

Sketch your surrounding and analyse the geometrics with the golden ratio

Exercise 2 part 2

Splitting Building



Assignment:
Sketch your surrounding
and analyse the
geometrics with the
golden ratio

Exercise 2 part 3

Picture Analysis / Environmental Analysis

lots of
Vegetation

